

# Handleiding voor T8 LED IP65 Armatuur



Dutchfullfillment BV  
Postbus 1819  
5602 CA Eindhoven

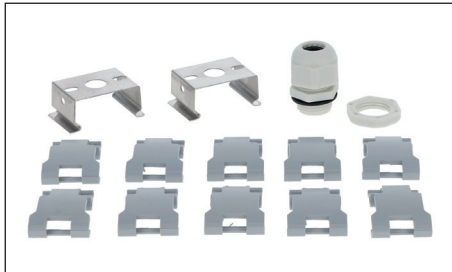


Model	Lengte	Breedte	Hoogte	Bestemd voor*
812799	1276 mm	62 mm	56 mm	1 buis
812805	1276 mm	91 mm	56 mm	2 buizen
812812	1576 mm	62 mm	56 mm	1 buis
812829	1576 mm	91 mm	56 mm	2 buizen

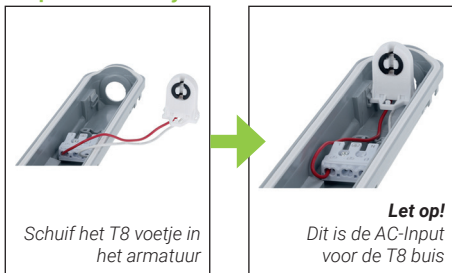
\* T8 buizen zijn niet bijgeleverd.

## Montage T8 LED IP65 Armatuur

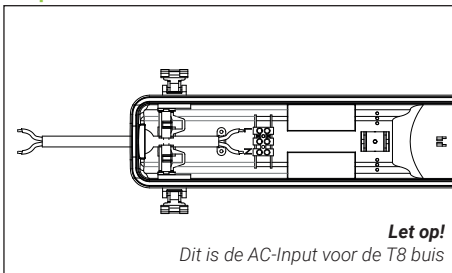
### Te monteren onderdelen



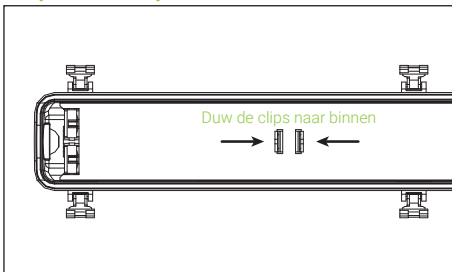
### Stap 2 - T8 voetjes monteren



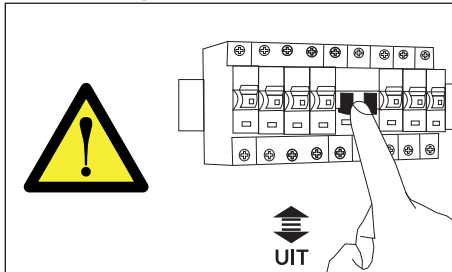
### Stap 4 - Aansluiten stroom



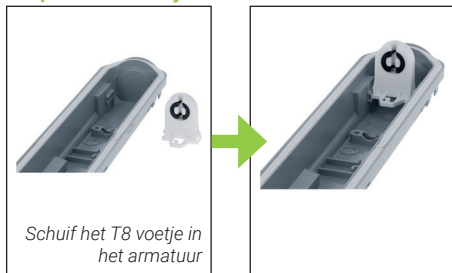
### Stap 6 - Afdekplaat monteren



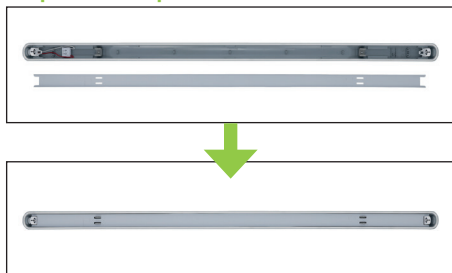
### Stap 1 - Veiligheid - Schakel de stroom uit



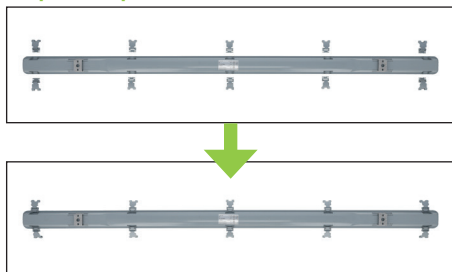
### Stap 3 - T8 voetjes monteren



### Stap 5 - Afdekplaat monteren

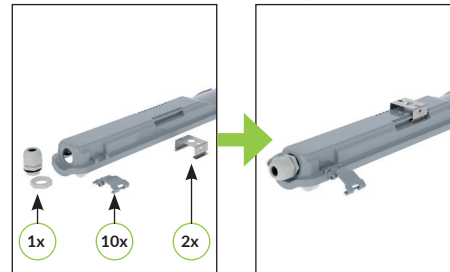


### Stap 7 - Clips voor cover monteren

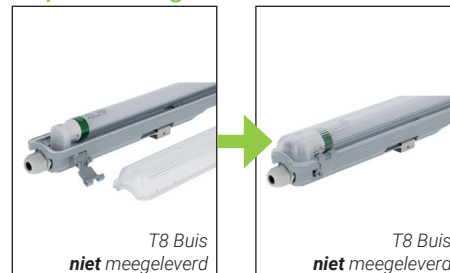


## Montage T8 LED IP65 Armatuur

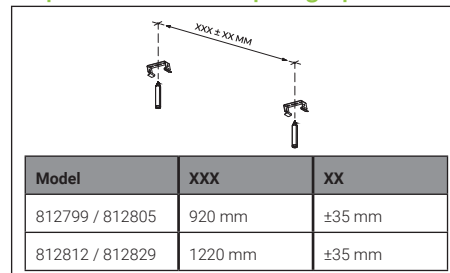
### Stap 4 tot en met 7 (close-up)



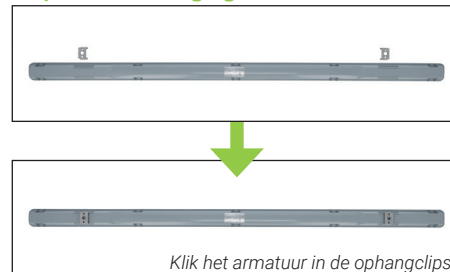
### Stap 9 - Montage cover



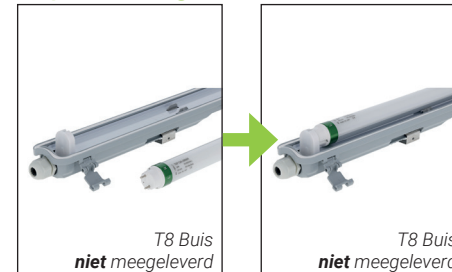
### Stap 10 - Boormaten ophangclips



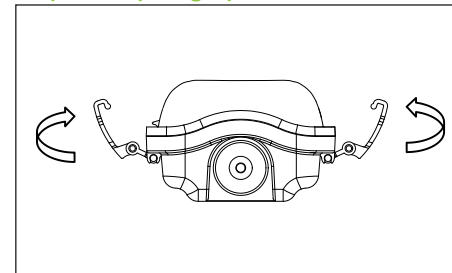
### Stap 12 - Bevestiging armatuur



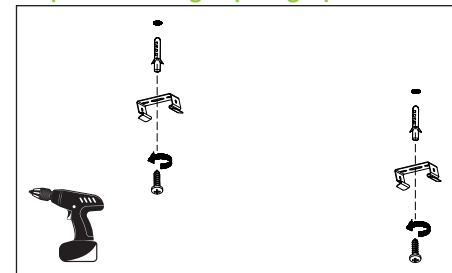
### Stap 8 - Montage T8 buis



### Stap 10 - Ophangclips dicht klemmen



### Stap 11 - Montage ophangclips



### Stap 13 - Veiligheid - Schakel de stroom in

