

Light Measurement Report

Print date: 11-8-2025

Measurement date and time: 31-7-2025 18:02:52 – Measurement no. VFR-250731-2292-MS

Measurement tracking No. and Link: [VT250731-007817](#)

Operator:



Laboratory and Equipment

Laboratory Owner and Location
Goniospectrometer System and Type
Sensor Name, Calibr. Date and Serial No.
Spectrometer Manufacturer and Model

Viso Systems, Copenhagen V, Denmark
LabSpion – Type C, horizontal
LabSensor Model2 – 11-1-2024 – 3130191315
Ibsen Photonics, Denmark – Freedom VIS (Custom Viso)

Measurement Conditions

Number of C-planes and Resolution
 γ (gamma)-Resolution
Test Distance
Input Power, Power and Displ. Factors
Input RMS Voltage and Current
Frequency of Input Power
Warm-up Time and Variation

12 planes – 30°
1,5°
1,99 m
7,3 W – PF 0,95 – DPF 0,97
230 V – 0,034 A
50 Hz
Lamp stabilized in 18 min 21 sec – 2,0%

Tested Light Source

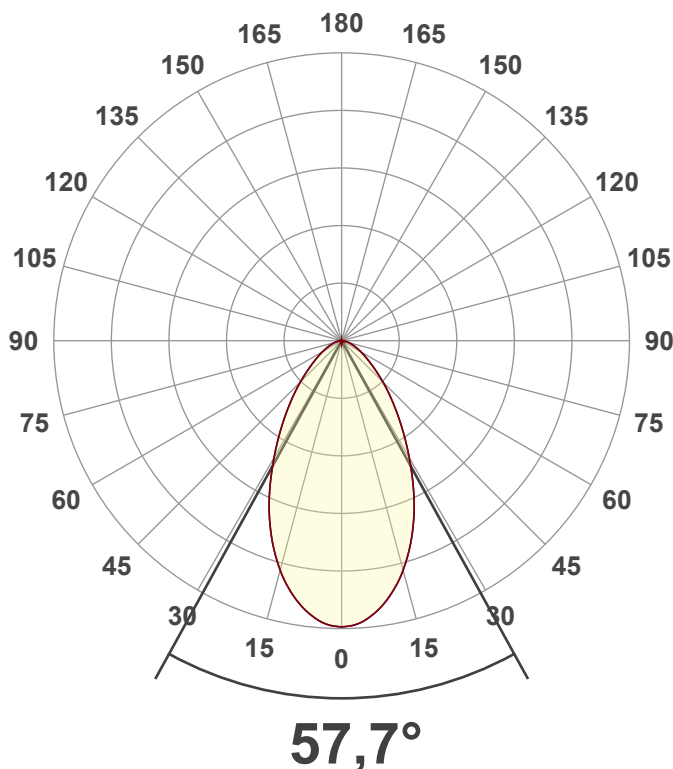
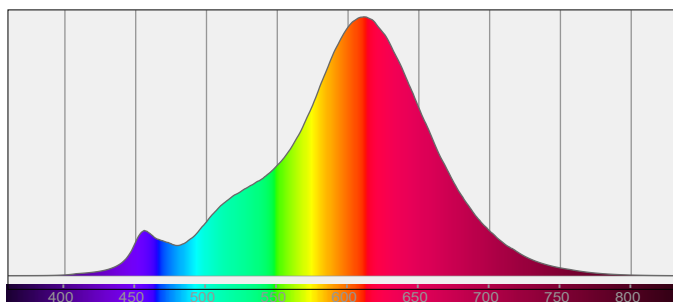
Product Name
Item No. and Manufacturer
Product Description (line 1)
SWITCH | ZWART

812058-7W-2300K
812058 – Dutchfulfillment
LED INBOUWSPOT | MIRAN | SLIM-FIT | 5W/7W | DIM TO WARM + CCT-

Main Light Measurement Results

Output – Total Lumen (Up% / Down%)
Efficiency
Peak Intensity and Beam Angle
Correlated Color Temperature, Target/Measured
Color Rendering Index
Color Rendering TM30-18
Color Shift, CIE duv and MacAdam Steps
Flicker

506 lm – 0,01% / 99,99%
69 lm/W
434 cd – 57,7°
CCT = 2300 K / 2341 K
CRI 82,3
R_f 85,3 – R_g 91,8
Duv 0,0025 – SDCM 4,2
SVM 0 – PstLM 0,01



Light Measurement Report

Print date: 11-8-2025

Measurement date and time: 31-7-2025 18:02:52 – Measurement no. VFR-250731-2292-MS

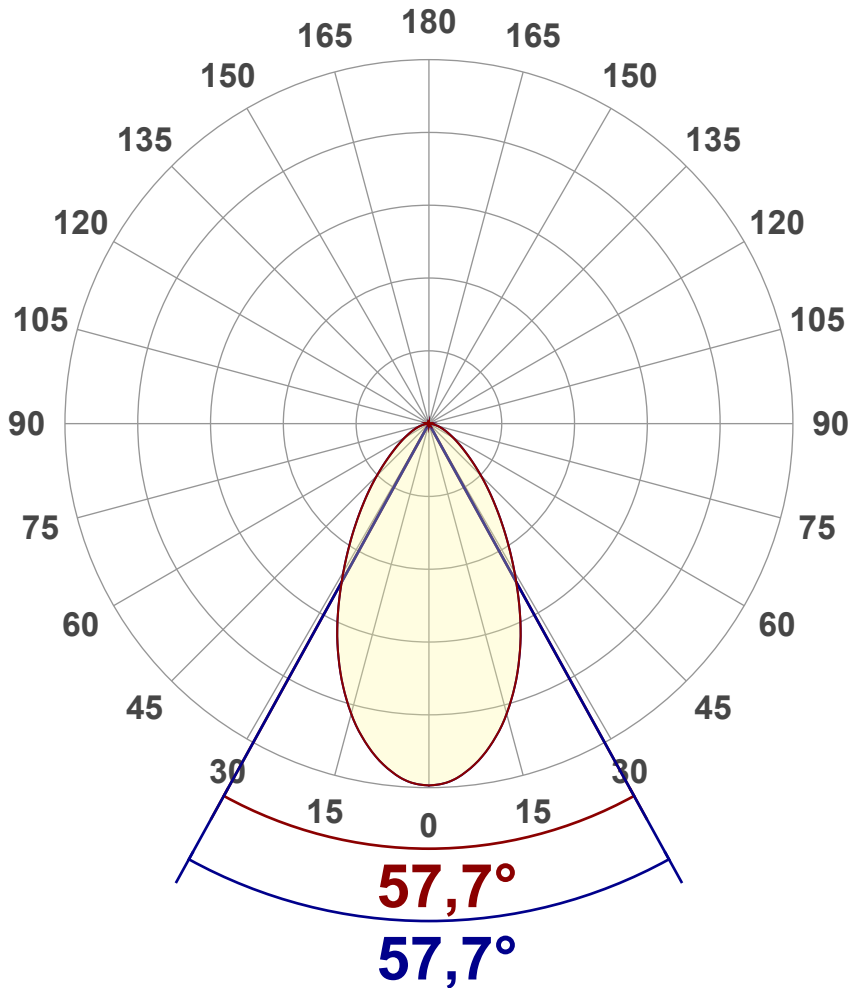
Measurement tracking No. and Link: [VT250731-007817](https://www.viso-systems.com/VT250731-007817)

Operator:



Luminous Intensity diagram

Unit: 0-100% of peak intensity



Main Values

| | |
|----------------------|----------------|
| Output (total Lumen) | 506 lm |
| Lumen Up% / Down% | 0,01% / 99,99% |
| Peak Intensity | 434 cd |
| Beam Angle (50%) | 57,7° |
| Beam Angle (90%) | 57,7° |
| Beam Angle (10%) | 57,7° |

Cut-off Angle

| | |
|--------------|--------|
| Average 2,5% | 149,9° |
|--------------|--------|

Field Angle

| | |
|-------------|--------|
| Average 10% | 111,9° |
|-------------|--------|

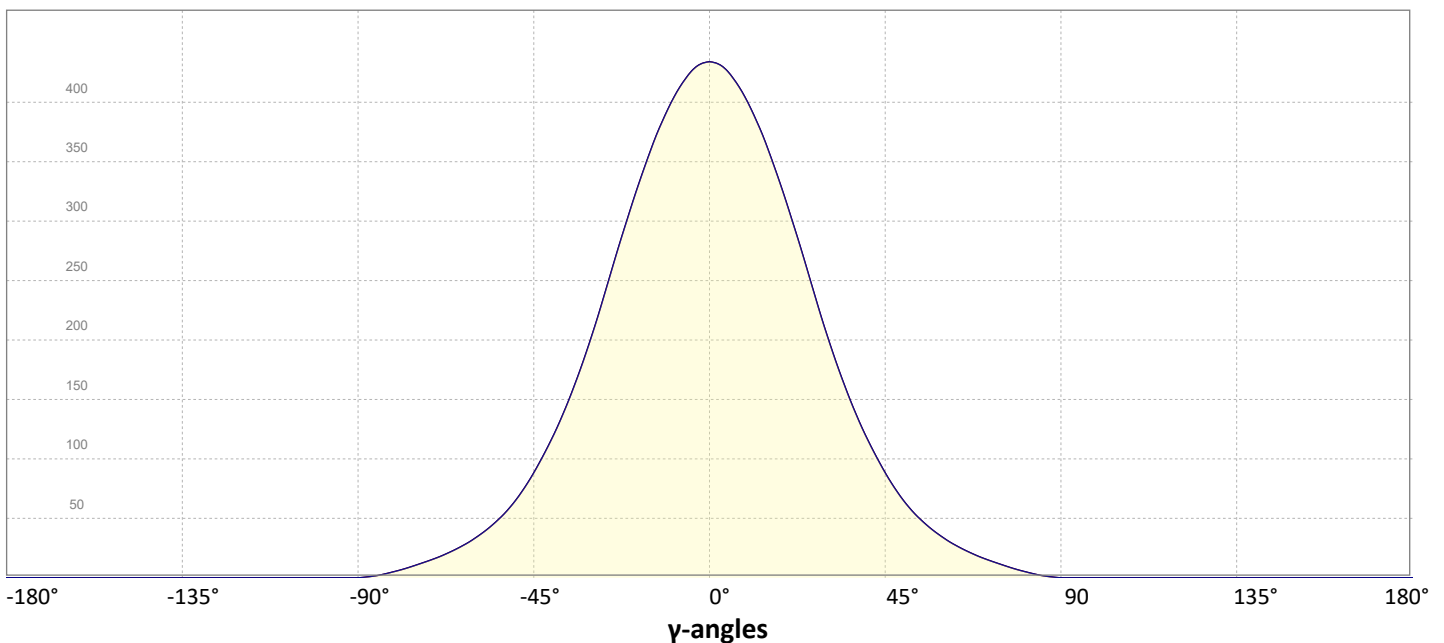
Intensity Ratio

| | |
|--------------|-------|
| In 120° cone | 92,5% |
| In 90° cone | 78,2% |

C000-C180

C090-C270

Linear distribution diagram - Intensity (candela) vs γ -angle



Light Measurement Report

Print date: 11-8-2025

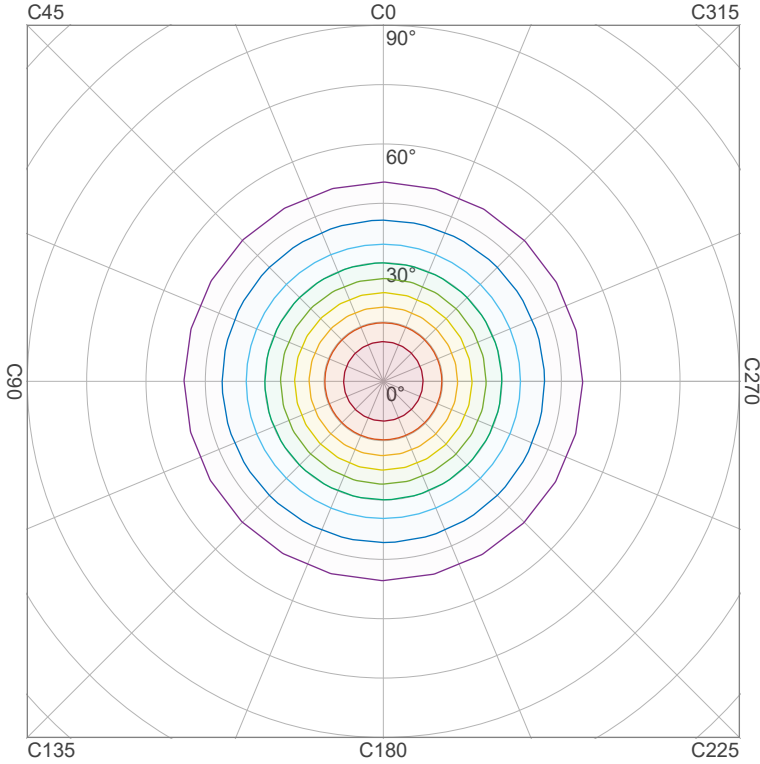
Measurement date and time: 31-7-2025 18:02:52 – Measurement no. VFR-250731-2292-MS

Measurement tracking No. and Link: [VT250731-007817](#)

Operator:



Iso-intensity Diagram (Iso-candela)

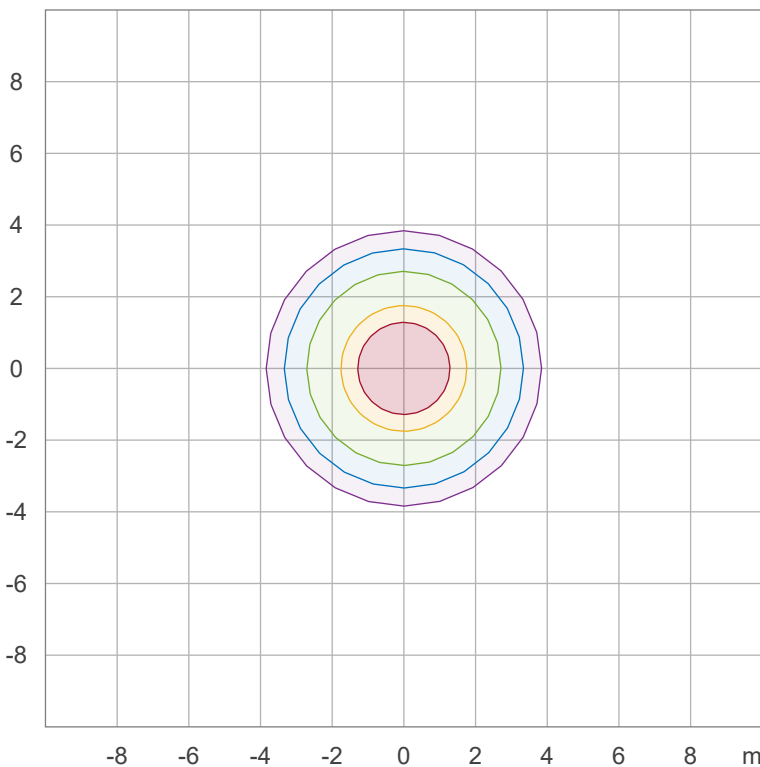


| | |
|------|----------|
| 90 % | 390,6 cd |
| 80 % | 347,2 cd |
| 70 % | 303,8 cd |
| 60 % | 260,4 cd |
| 50 % | 217,0 cd |
| 40 % | 173,6 cd |
| 30 % | 130,2 cd |
| 20 % | 86,8 cd |
| 10 % | 43,4 cd |

Peak intensity: 434,0 cd

Number of c-planes: 12

Iso-illuminance Diagram (Iso-lux)



| | |
|--------|---------|
| 50,0 % | 24,1 lx |
| 30,0 % | 14,5 lx |
| 10,0 % | 4,8 lx |
| 5,0 % | 2,4 lx |
| 3,0 % | 1,4 lx |

Peak illuminance: 48,2 lx

Mounting height: 3,0 m

Number of c-planes: 12

Light Measurement Report

Print date: 11-8-2025

Measurement date and time: 31-7-2025 18:02:52 – Measurement no. VFR-250731-2292-MS

Measurement tracking No. and Link: [VT250731-007817](https://www.viso-systems.com/VT250731-007817)

Operator:

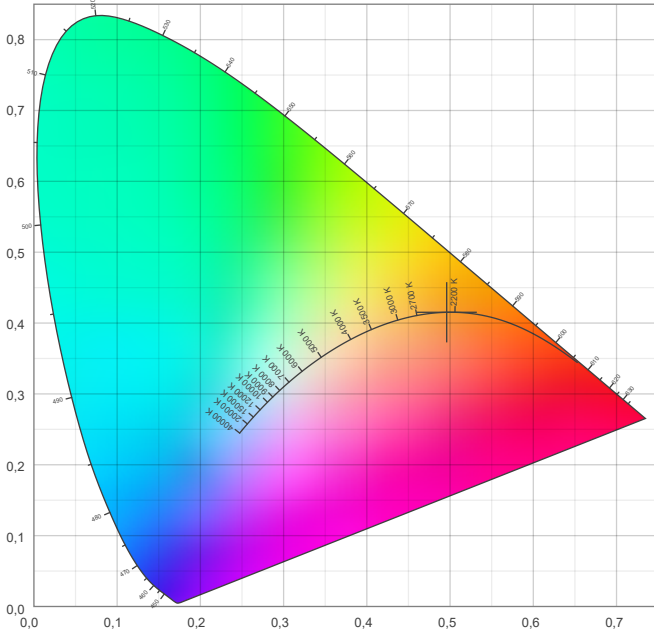


Color details

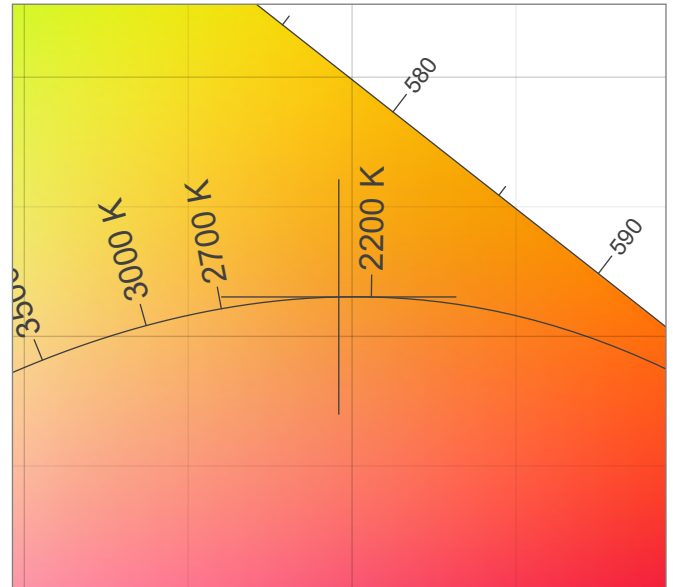
Correlated Color Temperature, Target CCT = 2300 K
 Correlated Color Temperature, Measured CCT = 2341 K
 Color Rendering Index CRI 82,3
 Color Rendering Index, R9 (red component) R9 = 5,9
 Color Rendering TM30-18 R_f 85,3 – R_g 91,8
 Color Quality Scale CQS = 80,3

MacAdam Steps SDCM = 4,2
 Color coordinates CIE 1931 (x;y) = (0,496;0,415)
 Color coordinate CIEs 1960 (u;v) = (0,284;0,356)
 Color deviation from BBL Duv = 0,0025
 Color coordinate CIEs 1976 (CIELUV) (u';v') = (0,284;0,535)

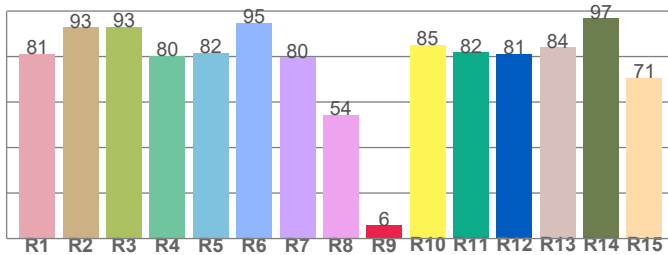
CIE 1931



CIE 1931 – zoomed on Planckian locus



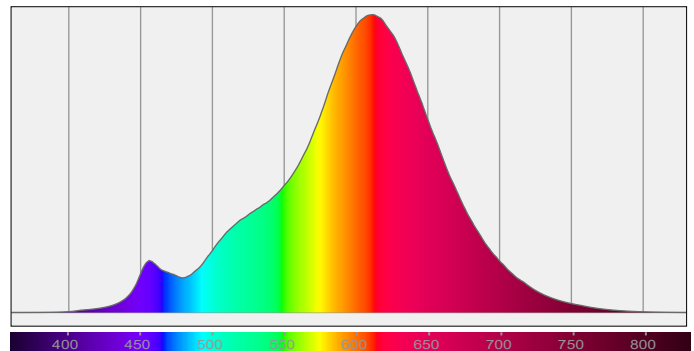
Color Rendering Index per reference color (CIE 1995)



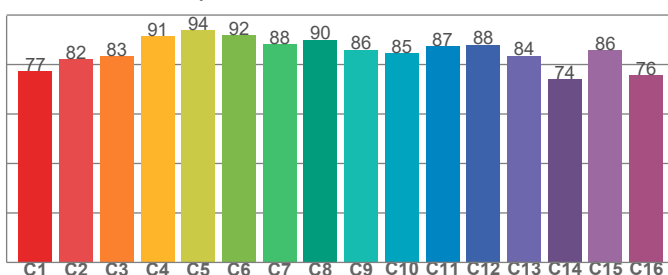
CRI R values, only R1-R8 are used to calculate final CRI value

| R1 | R2 | R3 | R4 | R5 | R6 | R7 | R8 | R9 | R10 | R11 | R12 | R13 | R14 | R15 |
|------|------|------|------|------|------|------|------|-----|------|------|------|------|------|------|
| 81,1 | 92,8 | 93,1 | 80,4 | 81,7 | 94,8 | 79,8 | 54,5 | 5,9 | 85,2 | 81,8 | 81,2 | 83,9 | 96,9 | 70,7 |

Spectral power distribution (SPD) / W/nm – 0-100%



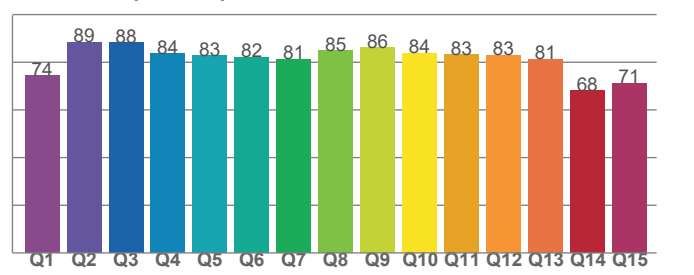
TM30-18 R_f-values per hue bin



TM30 C values, 16 binned values out of total of 99 C values

| C1 | C2 | C3 | C4 | C5 | C6 | C7 | C8 | C9 | C10 | C11 | C12 | C13 | C14 | C15 | C16 |
|------|------|------|------|------|------|------|------|------|------|------|------|------|------|------|------|
| 77,2 | 82,2 | 83,4 | 91,3 | 93,9 | 91,7 | 88,2 | 89,9 | 85,9 | 84,5 | 87,3 | 87,9 | 83,6 | 74,1 | 85,7 | 75,8 |

Color Quality Scale by reference color



CQS Q values

| Q1 | Q2 | Q3 | Q4 | Q5 | Q6 | Q7 | Q8 | Q9 | Q10 | Q11 | Q12 | Q13 | Q14 | Q15 |
|------|------|------|------|------|------|------|------|------|------|------|------|------|------|------|
| 74,3 | 88,5 | 88,1 | 83,5 | 82,7 | 82,1 | 81,3 | 84,9 | 86,2 | 83,7 | 83,2 | 82,9 | 81,2 | 68,1 | 71,1 |

Light Measurement Report

Print date: 11-8-2025

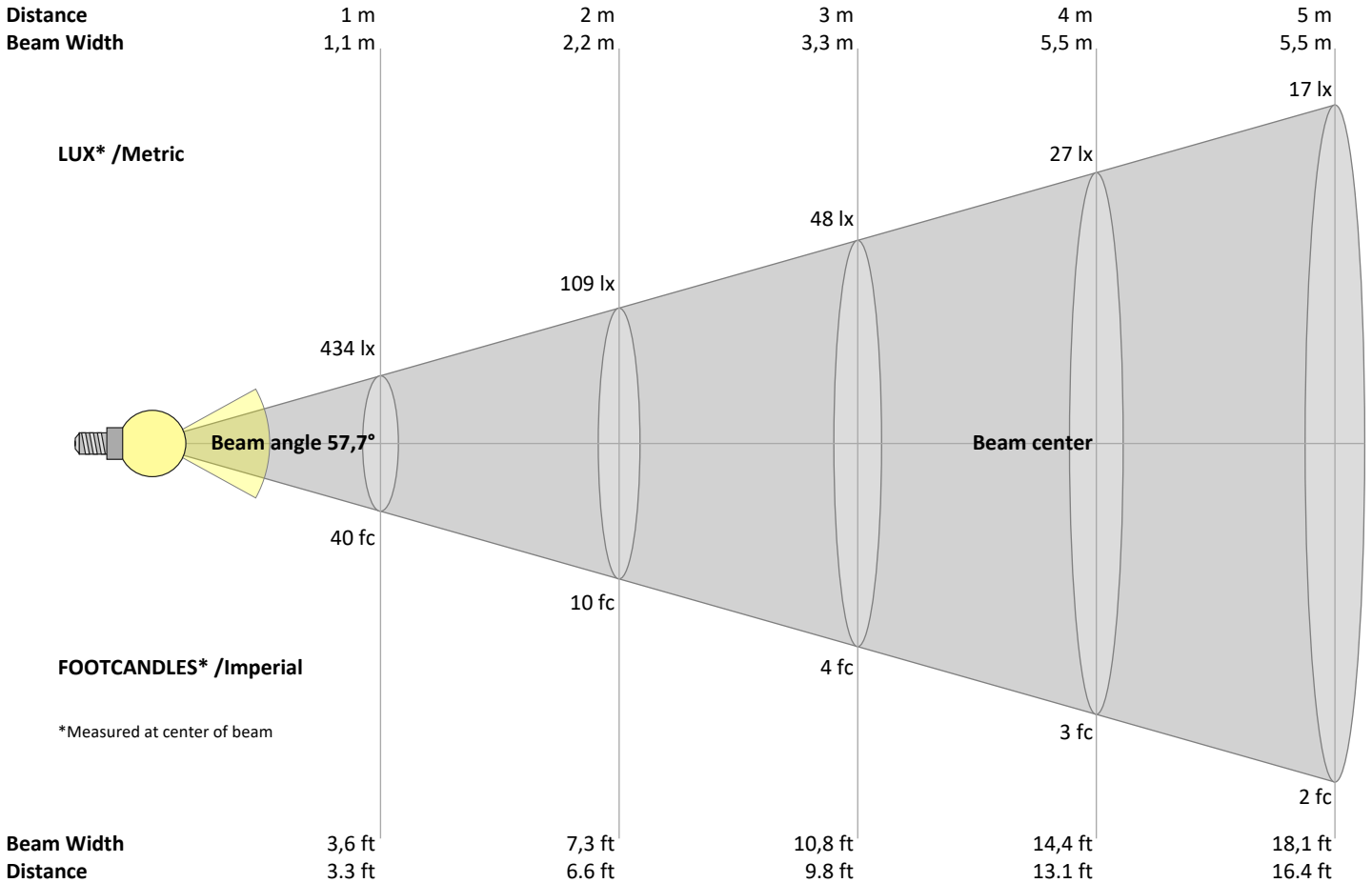
Measurement date and time: 31-7-2025 18:02:52 – Measurement no. VFR-250731-2292-MS

Measurement tracking No. and Link: [VT250731-007817](https://www.viso-systems.com/VT250731-007817)

Operator:



Beam Details



Beam intensities from 1 – 20 m

| 1 | 2 | 3 | 4 | 5 | 6 | 7 | 8 | 9 | 10 | 11 | 12 | 13 | 14 | 15 | 16 | 17 | 18 | 19 | 20 | m |
|------|------|-----|------|------|------|-----|------|------|------|------|------|------|------|------|------|------|------|------|------|-----|
| 3,3 | 6,6 | 9,8 | 13,1 | 16,4 | 19,7 | 23 | 26,2 | 29,5 | 32,8 | 36,1 | 39,4 | 42,7 | 45,9 | 49,2 | 52,5 | 55,8 | 59,1 | 62,3 | 65,6 | ft |
| 434 | 109 | 48 | 27 | 17 | 12 | 9 | 7 | 5 | 4 | 4 | 3 | 3 | 2 | 2 | 2 | 2 | 1 | 1 | 1 | lux |
| 40,3 | 10,1 | 4,5 | 2,5 | 1,6 | 1,1 | 0,8 | 0,6 | 0,5 | 0,4 | 0,3 | 0,3 | 0,2 | 0,2 | 0,2 | 0,2 | 0,1 | 0,1 | 0,1 | 0,1 | fc |

Intensities in 0° c-plane

| 0° | 5° | 10° | 15° | 20° | 25° | 30° | 35° | 40° | 45° | 50° | 55° | 60° | 65° | 70° | 75° | 80° | 85° | 90° | 95° | γ |
|------|-----|-----|-----|-----|-----|-----|-----|-----|-----|-----|-----|-----|-----|-----|-----|-----|-----|-----|-----|----------|
| 434 | 425 | 398 | 360 | 313 | 259 | 205 | 158 | 120 | 88 | 64 | 46 | 33 | 24 | 17 | 11 | 6 | 2 | 0 | 0 | cd |
| 100% | 98% | 92% | 83% | 72% | 60% | 47% | 36% | 28% | 20% | 15% | 11% | 8% | 6% | 4% | 2% | 1% | 0% | 0% | 0% | of 0°val |

Intensities in 90° c-plane

| 0° | 5° | 10° | 15° | 20° | 25° | 30° | 35° | 40° | 45° | 50° | 55° | 60° | 65° | 70° | 75° | 80° | 85° | 90° | 95° | γ |
|------|-----|-----|-----|-----|-----|-----|-----|-----|-----|-----|-----|-----|-----|-----|-----|-----|-----|-----|-----|----------|
| 434 | 425 | 398 | 360 | 313 | 259 | 205 | 158 | 120 | 88 | 64 | 46 | 33 | 24 | 17 | 11 | 6 | 2 | 0 | 0 | cd |
| 100% | 98% | 92% | 83% | 72% | 60% | 47% | 36% | 28% | 20% | 15% | 11% | 8% | 6% | 4% | 2% | 1% | 0% | 0% | 0% | of 0°val |

Intensities in 180° c-plane

| 0° | 5° | 10° | 15° | 20° | 25° | 30° | 35° | 40° | 45° | 50° | 55° | 60° | 65° | 70° | 75° | 80° | 85° | 90° | 95° | γ |
|------|-----|-----|-----|-----|-----|-----|-----|-----|-----|-----|-----|-----|-----|-----|-----|-----|-----|-----|-----|----------|
| 434 | 425 | 398 | 360 | 313 | 259 | 205 | 158 | 120 | 88 | 64 | 46 | 33 | 24 | 17 | 11 | 6 | 2 | 0 | 0 | cd |
| 100% | 98% | 92% | 83% | 72% | 60% | 47% | 36% | 28% | 20% | 15% | 11% | 8% | 6% | 4% | 2% | 1% | 0% | 0% | 0% | of 0°val |

Intensities in 270° c-plane

| 0° | 5° | 10° | 15° | 20° | 25° | 30° | 35° | 40° | 45° | 50° | 55° | 60° | 65° | 70° | 75° | 80° | 85° | 90° | 95° | γ |
|------|-----|-----|-----|-----|-----|-----|-----|-----|-----|-----|-----|-----|-----|-----|-----|-----|-----|-----|-----|----------|
| 434 | 425 | 398 | 360 | 313 | 259 | 205 | 158 | 120 | 88 | 64 | 46 | 33 | 24 | 17 | 11 | 6 | 2 | 0 | 0 | cd |
| 100% | 98% | 92% | 83% | 72% | 60% | 47% | 36% | 28% | 20% | 15% | 11% | 8% | 6% | 4% | 2% | 1% | 0% | 0% | 0% | of 0°val |

Light Measurement Report

Print date: 11-8-2025

Measurement date and time: 31-7-2025 18:02:52 – Measurement no. VFR-250731-2292-MS

Measurement tracking No. and Link: [VT250731-007817](#)

Operator:



Light Planning – UGR table

Uncorrected, comprehensive UGR table according to 117-1995

| Reflectances | | 70 | 70 | 50 | 50 | 30 | 70 | 70 | 50 | 50 | 30 |
|-------------------------------------|-----------|--|------|------|------|------|--|------|------|------|------|
| | ρ Ceiling | 70 | 70 | 50 | 50 | 30 | 70 | 70 | 50 | 50 | 30 |
| | ρ Walls | 50 | 30 | 50 | 30 | 30 | 50 | 30 | 50 | 30 | 30 |
| | ρ Floor | 20 | 20 | 20 | 20 | 20 | 20 | 20 | 20 | 20 | 20 |
| Room size | | Viewed Crosswise | | | | | Viewed Endwise | | | | |
| H = mounting height above eye level | | (Viewing direction orthogonal to lamp length axis) | | | | | (Viewing direction parallel to lamp length axis) | | | | |
| X | Y | | | | | | | | | | |
| 2H | 2H | 25,7 | 26,6 | 25,9 | 26,8 | 27,1 | 25,7 | 26,6 | 25,9 | 26,8 | 27,1 |
| | 3H | 26,2 | 27,2 | 26,6 | 27,4 | 27,6 | 26,2 | 27,2 | 26,6 | 27,4 | 27,6 |
| | 4H | 26,5 | 27,4 | 26,9 | 27,6 | 27,9 | 26,5 | 27,4 | 26,9 | 27,6 | 27,9 |
| | 6H | 26,7 | 27,5 | 27,0 | 27,7 | 28,1 | 26,7 | 27,5 | 27,0 | 27,7 | 28,1 |
| | 8H | 26,7 | 27,5 | 27,0 | 27,8 | 28,2 | 26,7 | 27,5 | 27,0 | 27,8 | 28,2 |
| | 12H | 26,7 | 27,4 | 27,0 | 27,8 | 28,2 | 26,7 | 27,4 | 27,0 | 27,8 | 28,2 |
| 4H | 2H | 25,9 | 26,8 | 26,3 | 27,0 | 27,3 | 25,9 | 26,8 | 26,3 | 27,0 | 27,3 |
| | 3H | 26,7 | 27,4 | 27,1 | 27,8 | 28,2 | 26,7 | 27,4 | 27,1 | 27,8 | 28,2 |
| | 4H | 27,0 | 27,7 | 27,4 | 28,1 | 28,6 | 27,0 | 27,7 | 27,4 | 28,1 | 28,6 |
| | 6H | 27,2 | 27,9 | 27,7 | 28,2 | 28,6 | 27,2 | 27,9 | 27,7 | 28,2 | 28,6 |
| | 8H | 27,3 | 27,9 | 27,8 | 28,2 | 28,6 | 27,3 | 27,9 | 27,8 | 28,2 | 28,6 |
| | 12H | 27,3 | 27,8 | 27,8 | 28,2 | 28,6 | 27,3 | 27,8 | 27,8 | 28,2 | 28,6 |
| 8H | 4H | 27,1 | 27,7 | 27,6 | 28,0 | 28,4 | 27,1 | 27,7 | 27,6 | 28,0 | 28,4 |
| | 6H | 27,4 | 27,8 | 27,9 | 28,3 | 28,8 | 27,4 | 27,8 | 27,9 | 28,3 | 28,8 |
| | 8H | 27,5 | 27,9 | 28,0 | 28,4 | 29,1 | 27,5 | 27,9 | 28,0 | 28,4 | 29,1 |
| | 12H | 27,6 | 27,9 | 28,2 | 28,4 | 29,0 | 27,6 | 27,9 | 28,2 | 28,4 | 29,0 |
| 12H | 4H | 27,0 | 27,5 | 27,5 | 28,0 | 28,4 | 27,0 | 27,5 | 27,5 | 28,0 | 28,4 |
| | 6H | 27,4 | 27,8 | 28,0 | 28,3 | 29,0 | 27,4 | 27,8 | 28,0 | 28,3 | 29,0 |
| | 8H | 27,5 | 27,9 | 28,1 | 28,4 | 29,0 | 27,5 | 27,9 | 28,1 | 28,4 | 29,0 |

Variations with the observer position for the luminaire spacings, S:

| | | |
|----------|------------|------------|
| S = 1.0H | 0,5 / -0,6 | 0,5 / -0,6 |
| S = 1.5H | 1,3 / -1,2 | 1,3 / -1,2 |
| S = 2.0H | 2,2 / -1,8 | 2,2 / -1,8 |

Coefficients of Utilization

| Ceiling reflectance | 80 | | | 70 | | | 50 | | | 30 | | | 10 | | | 0 | | |
|---------------------|--|-----|-----|-----|-----|-----|-----|-----|-----|-----|-----|-----|-----|-----|-----|-----|-----|-----|
| Wall reflectance | 70 | 50 | 30 | 10 | 70 | 50 | 30 | 10 | 50 | 30 | 10 | 50 | 30 | 10 | 50 | 30 | 10 | 0 |
| Floor reflectance | 20 | 20 | 20 | 20 | 20 | 20 | 20 | 20 | 20 | 20 | 20 | 20 | 20 | 20 | 20 | 20 | 20 | 0 |
| RCR | (RCR: Room Cavity Ratio) | | | | | | | | | | | | | | | | | |
| | Room Values are expressed as percentage of Lumen delivered to the task surface | | | | | | | | | | | | | | | | | |
| 0 | 119 | 119 | 119 | 119 | 116 | 116 | 116 | 116 | 111 | 111 | 106 | 106 | 106 | 102 | 102 | 102 | 100 | 100 |
| 1 | 112 | 108 | 105 | 102 | 109 | 106 | 103 | 101 | 102 | 100 | 97 | 98 | 96 | 94 | 95 | 93 | 92 | 90 |
| 2 | 104 | 98 | 93 | 89 | 102 | 96 | 92 | 88 | 93 | 89 | 86 | 90 | 87 | 84 | 87 | 84 | 82 | 80 |
| 3 | 97 | 89 | 83 | 78 | 95 | 88 | 82 | 77 | 85 | 80 | 76 | 83 | 78 | 75 | 80 | 77 | 74 | 72 |
| 4 | 91 | 82 | 75 | 70 | 89 | 81 | 74 | 69 | 78 | 73 | 68 | 76 | 71 | 67 | 74 | 70 | 67 | 65 |
| 5 | 85 | 75 | 68 | 63 | 84 | 74 | 67 | 62 | 72 | 66 | 62 | 70 | 65 | 61 | 69 | 64 | 61 | 59 |
| 6 | 80 | 69 | 62 | 57 | 79 | 69 | 62 | 57 | 67 | 61 | 56 | 65 | 60 | 56 | 64 | 59 | 55 | 54 |
| 7 | 75 | 64 | 57 | 52 | 74 | 64 | 57 | 52 | 62 | 56 | 52 | 61 | 55 | 51 | 60 | 55 | 51 | 49 |
| 8 | 71 | 60 | 53 | 48 | 70 | 59 | 53 | 48 | 58 | 52 | 48 | 57 | 51 | 47 | 56 | 51 | 47 | 46 |
| 9 | 67 | 56 | 49 | 44 | 66 | 55 | 49 | 44 | 54 | 48 | 44 | 53 | 48 | 44 | 53 | 48 | 44 | 42 |
| 10 | 64 | 53 | 46 | 41 | 63 | 52 | 46 | 41 | 51 | 45 | 41 | 50 | 45 | 41 | 50 | 44 | 41 | 39 |

Light Measurement Report

Print date: 11-8-2025

Measurement date and time: 31-7-2025 18:02:52 – Measurement no. VFR-250731-2292-MS

Measurement tracking No. and Link: [VT250731-007817](#)

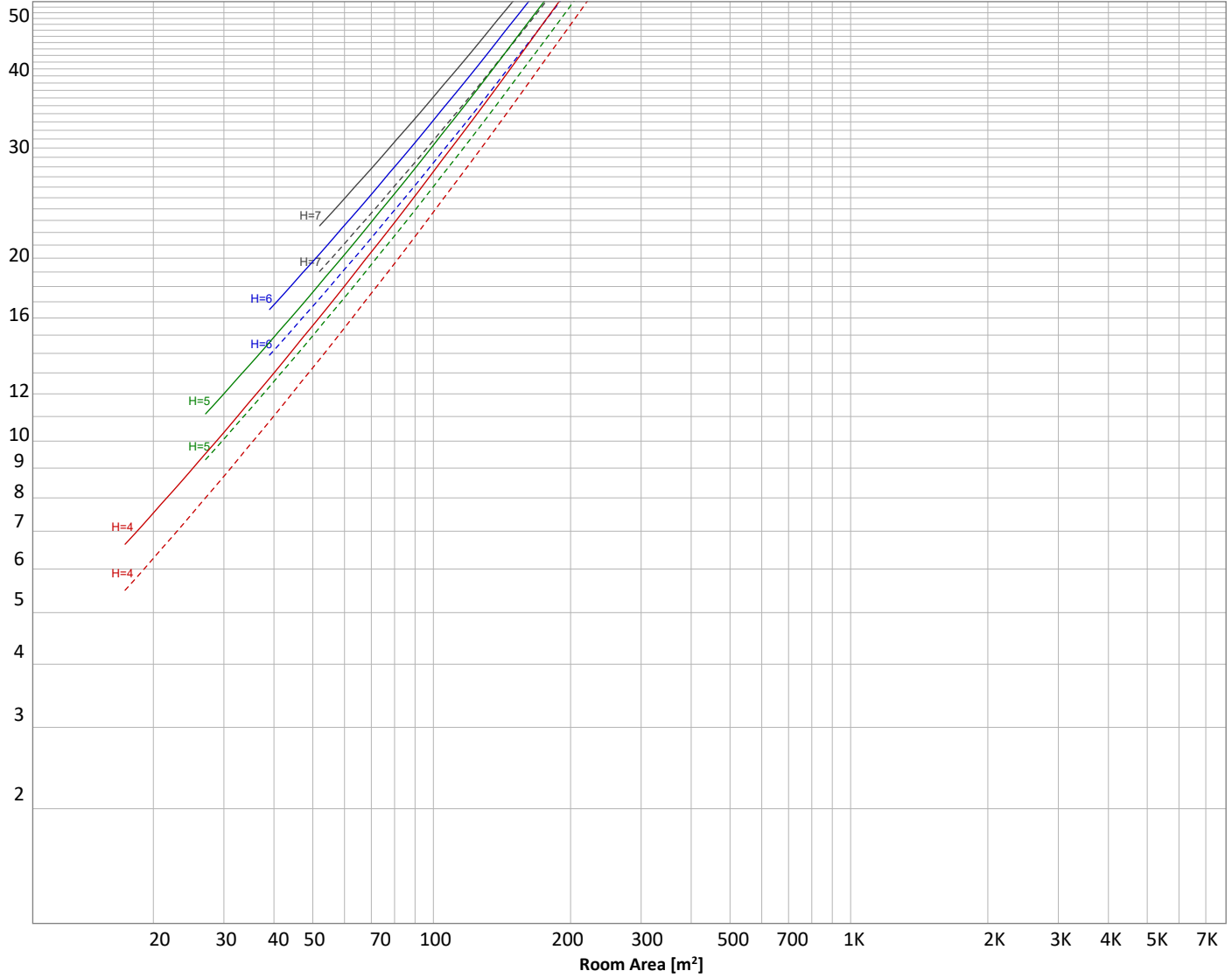
Operator:



Luminaire budgetary diagram

Uncorrected, comprehensive UGR table according to 117-1995

LAMPS (number of lamps)



Conditions

| | | | | | |
|---|---------------|-----------|---------------------|--------------------------|-------------------|
| H = Room height | Flux = 506 lm | | | | |
| H _{down} = Lamp distance from ceiling = | 0.00 m | Line type | Ceiling reflectance | ρ(%) Wall reflectance | Floor reflectance |
| H _{work} = Work area height from floor = | 0.00 m | ----- | 70 | 50 | 30 |
| E _{work} = Average lux on work area = | 100 lx | _____ | 50 | 30 | 20 |

Zonal Lumen Summary

| | | | | | | | | |
|----------|-----------|-----------|-----------|-----------|-----------|-----------|-----------|-----------|
| 0°-10° | 10°-20° | 20°-30° | 30°-40° | 40°-50° | 50°-60° | 60°-70° | 70°-80° | 80°-90° |
| 39,7 lm | 100 lm | 118 lm | 99,2 lm | 68,6 lm | 41,8 lm | 24,0 lm | 11,5 lm | 2,51 lm |
| 90°-100° | 100°-110° | 110°-120° | 120°-130° | 130°-140° | 140°-150° | 150°-160° | 160°-170° | 170°-180° |
| 0,003 lm | 0,001 lm | 0,000 lm | 0,000 lm | 0,002 lm | 0,004 lm | 0,003 lm | 0,008 lm | 0,005 lm |

Light Measurement Report

Print date: 11-8-2025

Measurement date and time: 31-7-2025 18:02:52 – Measurement no. VFR-250731-2292-MS

Measurement tracking No. and Link: [VT250731-007817](#)

Operator:



Outdoor Light Planning

Lumen per Zone

| Zone (γ) | Lumen | % Total |
|--------------|---------------|---------------|
| 0-10° | 40 lm | 7,8% |
| 10-20° | 100 lm | 19,8% |
| 20-30° | 118 lm | 23,4% |
| 30-40° | 99 lm | 19,6% |
| 40-50° | 69 lm | 13,6% |
| 50-60° | 42 lm | 8,3% |
| 60-70° | 24 lm | 4,7% |
| 70-80° | 12 lm | 2,3% |
| 80-90° | 3 lm | 0,5% |
| 90-100° | 0 lm | 0,0% |
| 100-110° | 0 lm | 0,0% |
| 110-120° | 0 lm | 0,0% |
| 120-130° | 0 lm | 0,0% |
| 130-140° | 0 lm | 0,0% |
| 140-150° | 0 lm | 0,0% |
| 150-160° | 0 lm | 0,0% |
| 160-170° | 0 lm | 0,0% |
| 170-180° | 0 lm | 0,0% |
| Total | 506 lm | 100,0% |

Intensity peaks

| | |
|----------------|--------|
| Max intensity | 434 cd |
| Intensity, 90° | 0 cd |
| Intensity, 0° | 434 cd |

Zonal Lumen summary

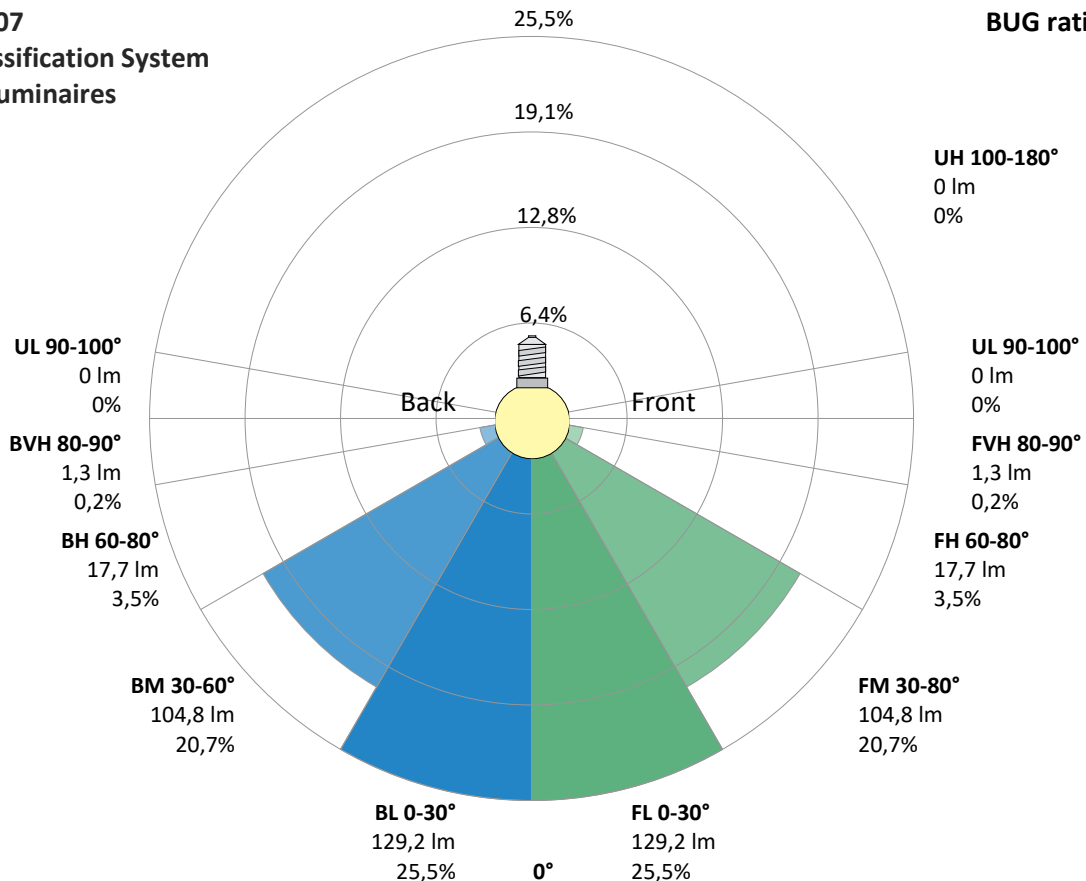
| Zone (γ) | Lumen | % Total |
|----------|--------|---------|
| 0-30° | 258 lm | 51,1% |
| 0-40° | 358 lm | 70,7% |
| 0-60° | 468 lm | 92,5% |
| 60-90° | 38 lm | 7,5% |
| 70-100° | 14 lm | 2,8% |
| 90-120° | 0 lm | 0,0% |
| 0-90° | 506 lm | 100,0% |
| 90-180° | 0 lm | 0,0% |
| 0-180° | 506 lm | 100,0% |

BUG rating

| | Lumen | % Total |
|----------------------|--------|---------|
| Forward light | | |
| Low(0-30°) | 129 lm | 25,5% |
| Medium(30-60°) | 105 lm | 20,7% |
| High(60-80°) | 18 lm | 3,5% |
| Very high(80-90°) | 1 lm | 0,2% |
| Back light | | |
| Low(0-30°) | 129 lm | 25,5% |
| Medium(30-60°) | 105 lm | 20,7% |
| High(60-80°) | 18 lm | 3,5% |
| Very high(80-90°) | 1 lm | 0,2% |
| Uplight | | |
| Low(90-100°) | 0 lm | 0,0% |
| High(100-180°) | 0 lm | 0,0% |

IESNA TM-15-07 Luminaire Classification System For Outdoor Luminaires

BUG rating B1 U0 G0



Light Measurement Report

Print date: 11-8-2025

Measurement date and time: 31-7-2025 18:02:52 – Measurement no. VFR-250731-2292-MS

Measurement tracking No. and Link: [VT250731-007817](#)

Operator:

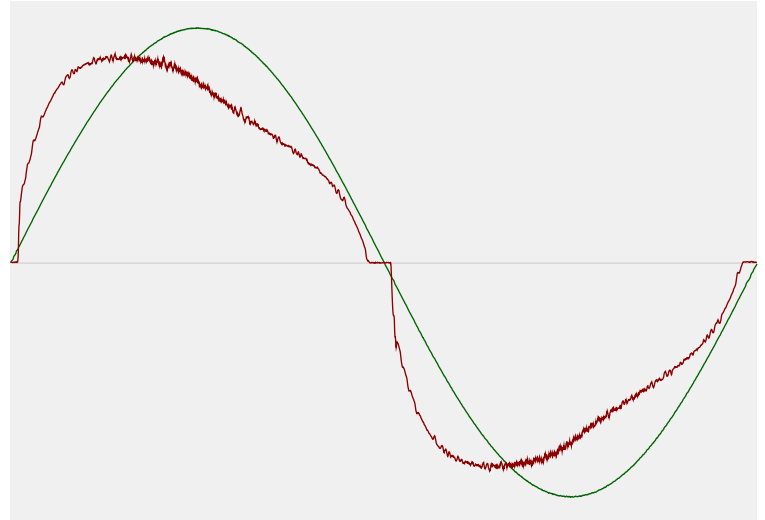


Power Details

Input Power

| | |
|---|---------|
| Power feed to light source | 7,3 W |
| Frequency of input power | 50 Hz |
| RMS Input voltage feed, V_{RMS} | 230 V |
| RMS Input current feed, I_{RMS} | 0,034 A |
| Volt-Ampere or apparent power = $V_{RMS} * I_{RMS}$ | 7,72 VA |
| Displacement factor of AC power feed | 0,97 |
| Power factor of AC current feed | 0,95 |
| Total harmonic distortion of the current | 19,03% |
| Total harmonic distortion of the voltage | 0,06% |

Input Power Curve



Efficiency

Radiated power efficiency 21,8%



Lumen efficiency 69 lm/W



Stabilization Details

Warmup Conditions

| | |
|-------------------|--------|
| Stable period | 15 min |
| Stable change max | 2,0% |
| Minimum time | 15 min |

Color Temperature Change

| | |
|-----------|--------|
| CCT start | 2296 K |
| CCT shift | +4 K |
| CCT end | 2300 K |

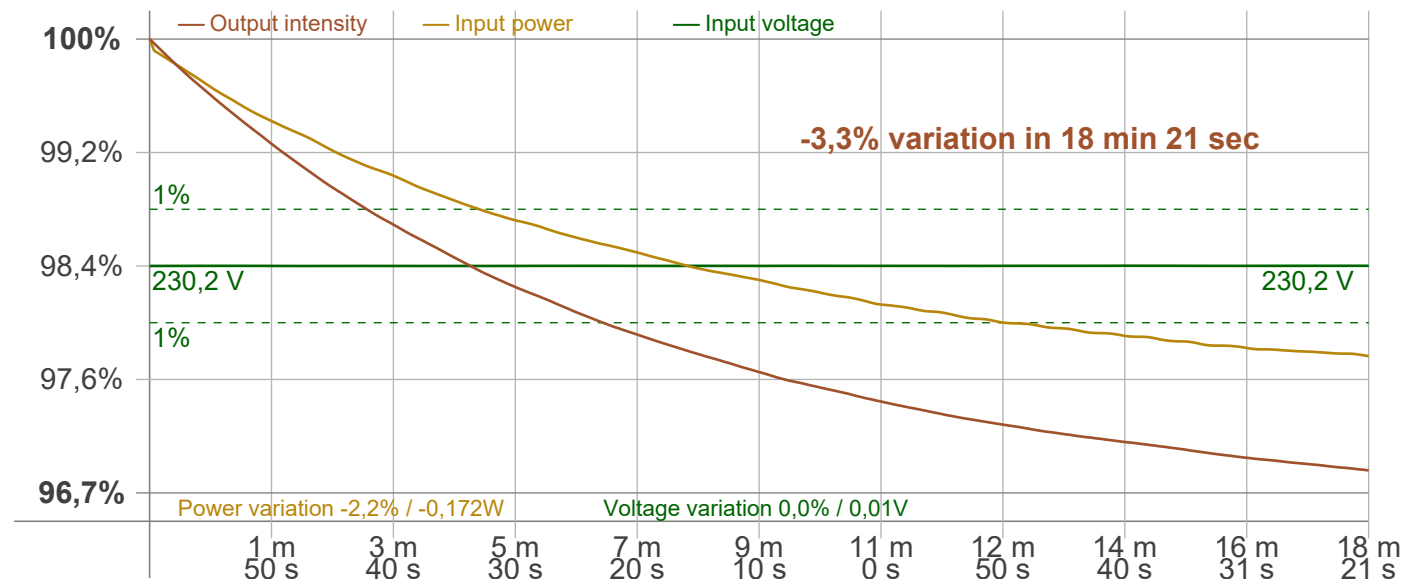
Warmup Result

| | |
|-------------------|----------------------------------|
| Total warmup time | Lamp stabilized in 18 min 21 sec |
| Warmup variation | -3,3% |

Output Change

| | |
|---------------|--------|
| Output start | 523 lm |
| Output change | -17 lm |
| Output end | 506 lm |

Stabilization Curve



Light Measurement Report

Print date: 11-8-2025

Measurement date and time: 31-7-2025 18:02:52 – Measurement no. VFR-250731-2292-MS

Measurement tracking No. and Link: [VT250731-007817](https://www.viso-systems.com/VT250731-007817)

Operator:



Flicker /TLA details

Flicker Meter Type Viso Systems LabFlicker
 Frequency of input power 50 Hz
 Flicker/TLA sample rate 20000 samples/s

Measurement time
 PstLM 180 sec
 All other indices 1,2 sec

Flicker indices according to Illuminating Engineering Society (IES)

Flicker frequency 98,04 Hz
 Percent Flicker 0,09 %
 Flicker index 0

Flicker indices according to California Energy Commission (CEC) 2016b

JA8/10 40 Hz 0,01 %
 JA8/10 90 Hz 0,01 %
 JA8/10 200 Hz 0,07 %
 JA8/10 400 Hz 0,07 %
 JA8/10 1000 Hz 0,08 %

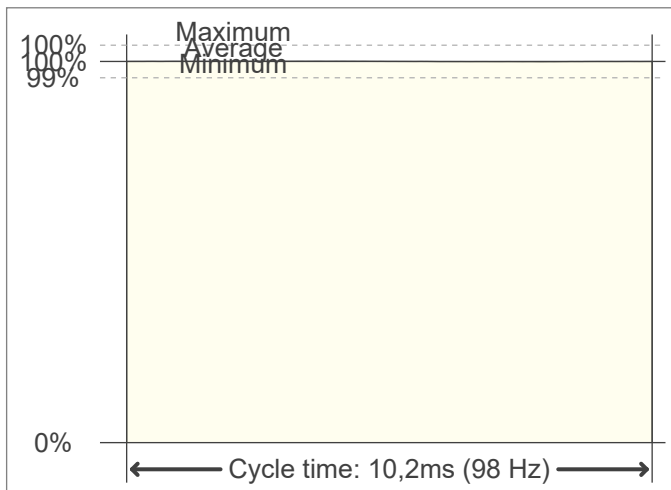
TLA indices (re IEC TR 61547-1, IEC 61000-3-3 and IEC 61000-4-15)

PstLM value (F < 80 Hz) 0,01
 SVM value (80 < F < 2000 Hz) 0

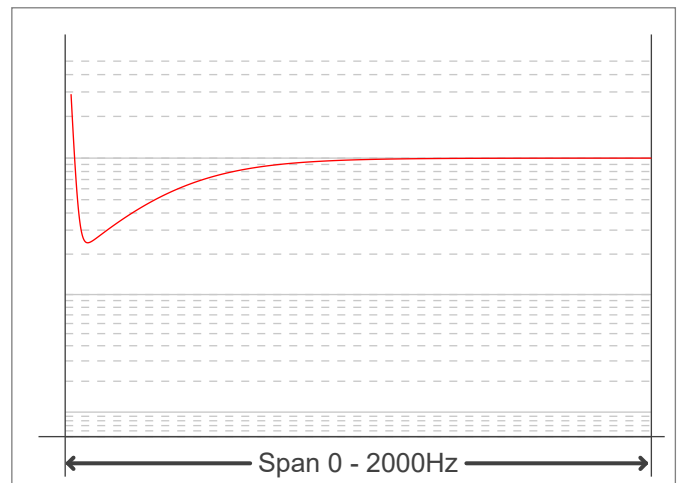
Flicker indices according to Lighting Research Center (2015)

Perception metric, Assist Mp 0

Flicker frame (frame of one flicker period in time domain)



Flicker FFT (flicker curve in frequency domain)



IEEE 1789 Frequency/modulation plot

