

# Light Measurement Report

Print date: 8-4-2025

Measurement date and time: 8-4-2025 08:45:50 – Measurement no. VFR-250408-0625-MS

Measurement tracking No. and Link: [VT250408-003375](https://www.viso-systems.com/track/VT250408-003375)

Operator:



## Laboratory and Equipment

Laboratory Owner and Location  
Goniospectrometer System and Type  
Sensor Name, Calibr. Date and Serial No.  
Spectrometer Manufacturer and Model

Viso Systems, Copenhagen V, Denmark  
LabSpion – Type C, horizontal  
LabSensor Model2 – 11-1-2024 – 3130191315  
Ibsen Photonics, Denmark – Freedom VIS (Custom Viso)

## Measurement Conditions

Number of C-planes and Resolution  
 $\gamma$  (gamma)-Resolution  
Test Distance  
Input Power, Power and Displ. Factors  
Input RMS Voltage and Current  
Frequency of Input Power  
Warm-up Time and Variation

72 planes – 5°  
5°  
1,99 m  
10,9 W – PF 0,94 – DPF 0,96  
230 V – 0,050 A  
50 Hz  
Lamp stabilized in 18 min 4 sec – 2,0%

## Tested Light Source

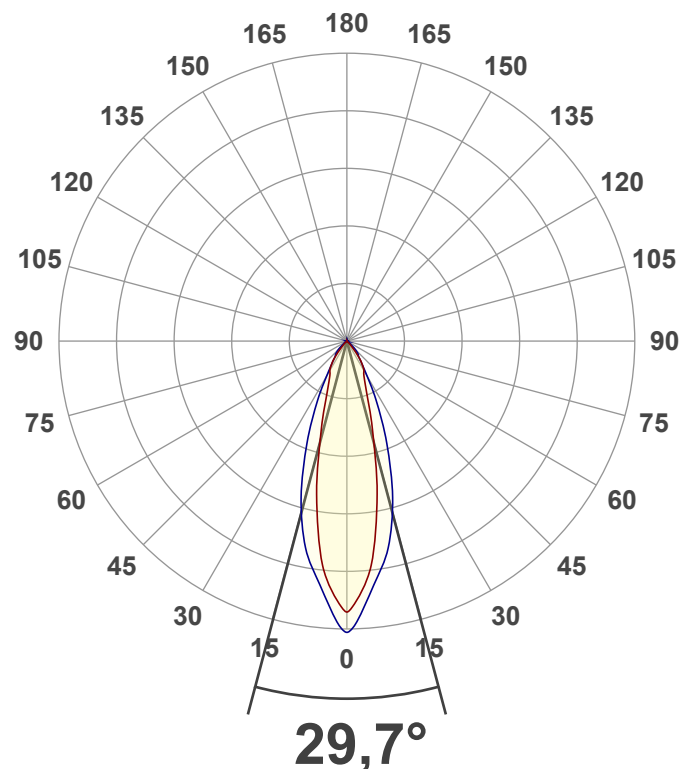
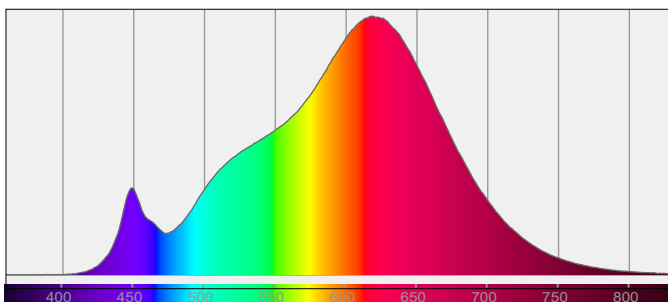
Product Name  
Item No. and Manufacturer  
Product Description (line 1)

810726-2700K  
810726-2700K – Dutchfulfillment  
1-FASE RAILSPOT | PANDO | 10W | ZWART | CCT-SWITCH

## Main Light Measurement Results

Output – Total Lumen (Up% / Down%)  
Efficiency  
Peak Intensity and Beam Angle  
Correlated Color Temperature, Target/Measured  
Color Rendering Index  
Color Rendering TM30-18  
Color Shift, CIE duv and MacAdam Steps  
Flicker

900 lm – 0,03% / 99,97%  
83 lm/W  
2570 cd – 29,7°  
CCT = 2700 K / 2747 K  
CRI 92,9  
 $R_f$  92,9 –  $R_g$  98,7  
Duv 0,0013 – SDCM 2,3  
SVM 0,03 – PstLM 0,04



# Light Measurement Report

Print date: 8-4-2025

Measurement date and time: 8-4-2025 08:45:50 – Measurement no. VFR-250408-0625-MS

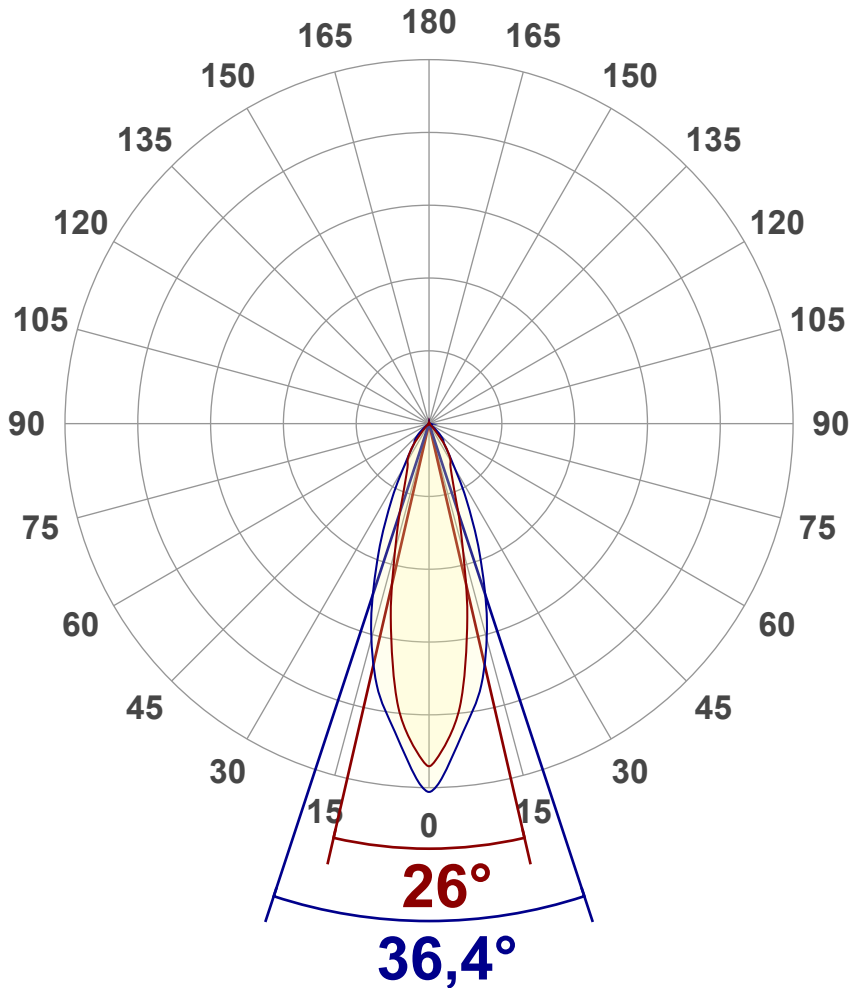
Measurement tracking No. and Link: [VT250408-003375](https://www.viso-systems.com/VT250408-003375)

Operator:



## Luminous Intensity diagram

Unit: 0-100% of peak intensity



### Main Values

Output (total Lumen)	900 lm
Lumen Up% / Down%	0,03% / 99,97%
Peak Intensity	2570 cd
Beam Angle (50%)	29,7°
Beam Angle (90%)	36,4°
Beam Angle (10%)	25,6°

### Cut-off Angle

Average 2,5%	88,8°
--------------	-------

### Field Angle

Average 10%	67°
-------------	-----

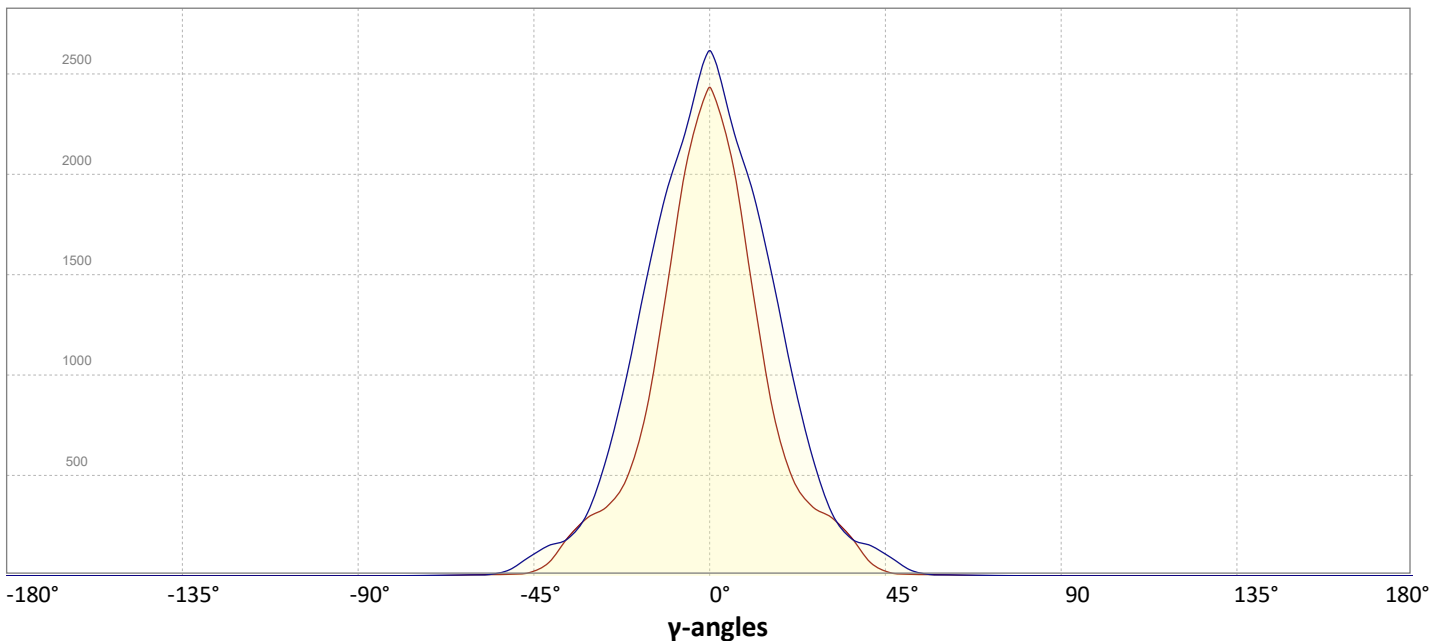
### Intensity Ratio

In 120° cone	99,6%
In 90° cone	97,8%

**C000-C180**

**C090-C270**

## Linear distribution diagram - Intensity (candela) vs $\gamma$ -angle



# Light Measurement Report

Print date: 8-4-2025

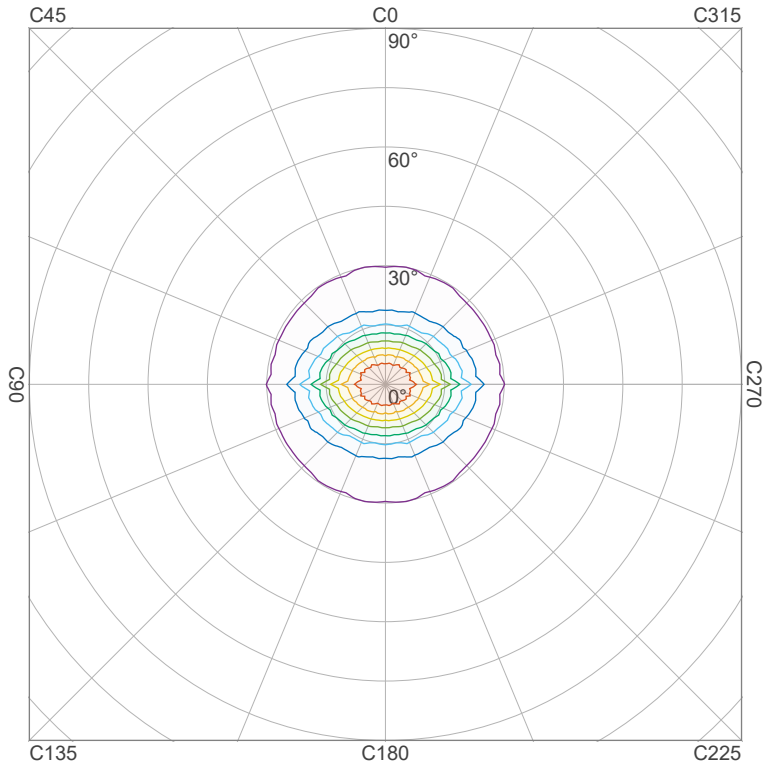
Measurement date and time: 8-4-2025 08:45:50 – Measurement no. VFR-250408-0625-MS

Measurement tracking No. and Link: [VT250408-003375](https://vt250408-003375)

Operator:



## Iso-intensity Diagram (Iso-candela)

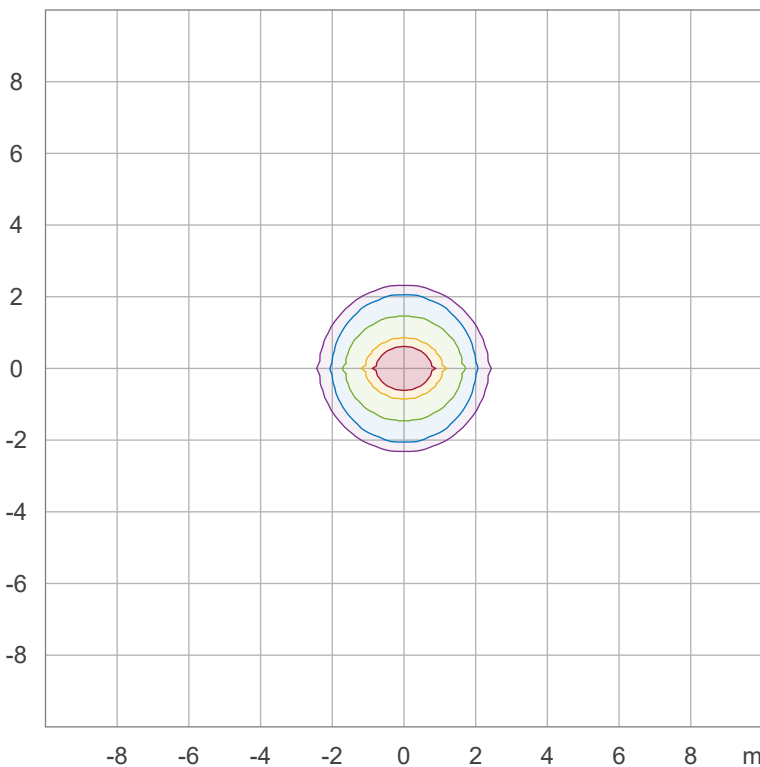


90 %	2313,4 cd
80 %	2056,3 cd
70 %	1799,3 cd
60 %	1542,2 cd
50 %	1285,2 cd
40 %	1028,2 cd
30 %	771,1 cd
20 %	514,1 cd
10 %	257,0 cd

Peak intensity: 2570,4 cd

Number of c-planes: 72

## Iso-illuminance Diagram (Iso-lux)



50,0 %	142,7 lx
30,0 %	85,6 lx
10,0 %	28,5 lx
5,0 %	14,3 lx
3,0 %	8,6 lx

Peak illuminance: 285,5 lx

Mounting height: 3,0 m

Number of c-planes: 72

# Light Measurement Report

Print date: 8-4-2025

Measurement date and time: 8-4-2025 08:45:50 – Measurement no. VFR-250408-0625-MS

Measurement tracking No. and Link: [VT250408-003375](#)

Operator:

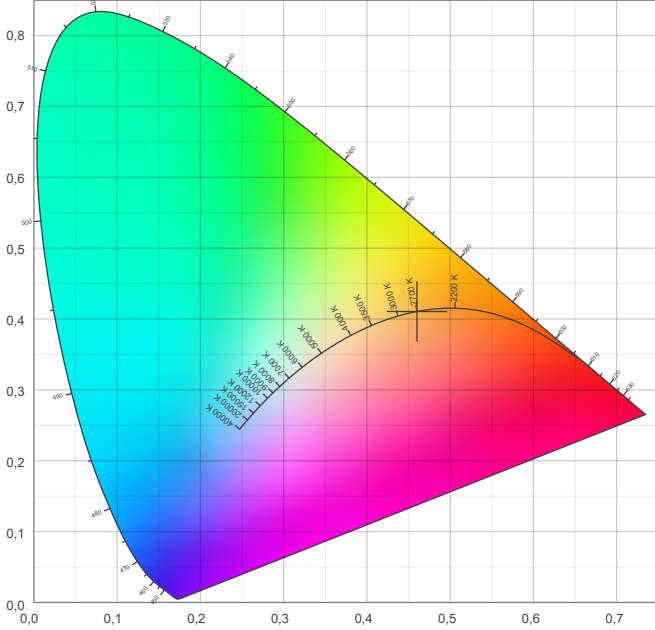


## Color details

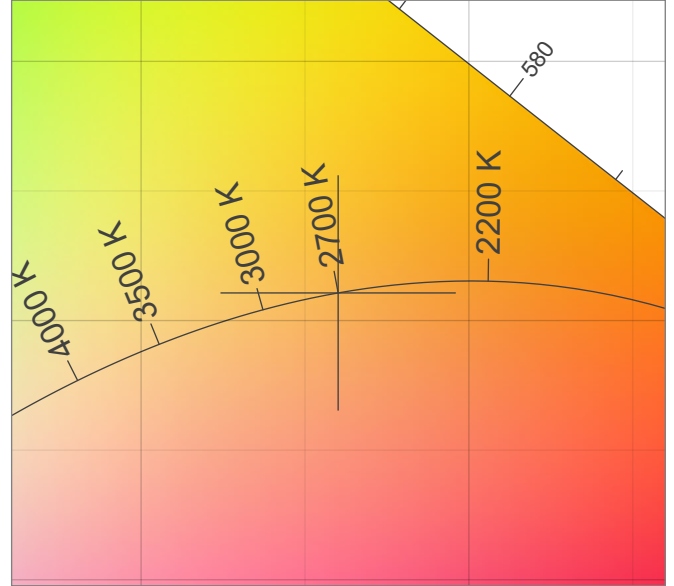
Correlated Color Temperature, Target CCT = 2700 K  
 Correlated Color Temperature, Measured CCT = 2747 K  
 Color Rendering Index CRI 92,9  
 Color Rendering Index, R9 (red component) R9 = 53,0  
 Color Rendering TM30-18 R<sub>f</sub> 92,9 – R<sub>g</sub> 98,7  
 Color Quality Scale CQS = 91,0

MacAdam Steps SDCM = 2,3  
 Color coordinates CIE 1931 (x;y) = (0,460;0,411)  
 Color coordinate CIEs 1960 (u;v) = (0,263;0,352)  
 Color deviation from BBL Duv = 0,0013  
 Color coordinate CIEs 1976 (CIELUV) (u';v') = (0,263;0,527)

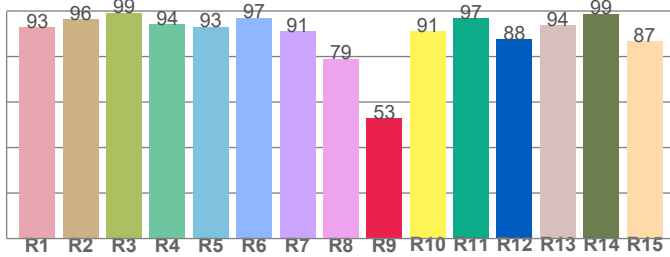
### CIE 1931



### CIE 1931 – zoomed on Planckian locus



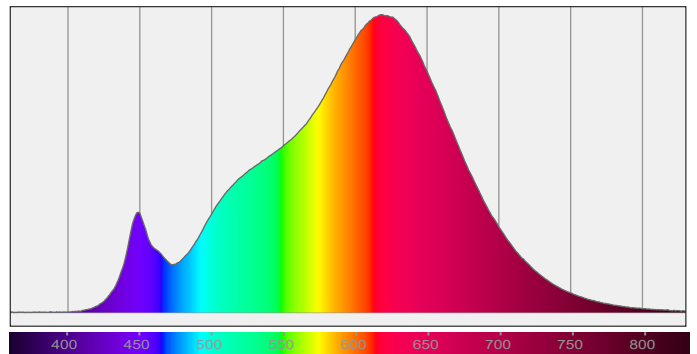
### Color Rendering Index per reference color (CIE 1995)



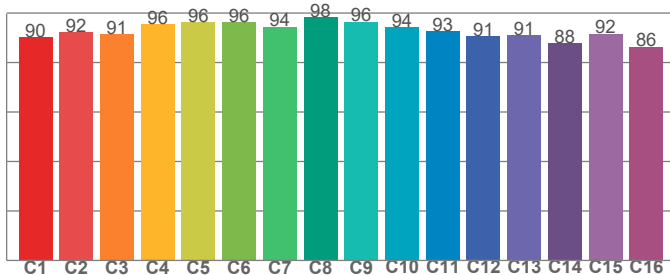
CRI R values, only R1-R8 are used to calculate final CRI value

R1	R2	R3	R4	R5	R6	R7	R8	R9	R10	R11	R12	R13	R14	R15
92,8	96,3	99,3	94,3	93,0	97,0	91,2	79,0	53,0	91,2	96,7	87,7	93,8	98,9	86,6

### Spectral power distribution (SPD) / W/nm – 0-100%



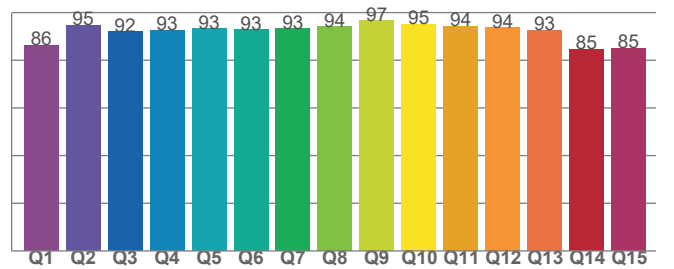
### TM30-18 Rf-values per hue bin



TM30 C values, 16 binned values out of total of 99 C values

C1	C2	C3	C4	C5	C6	C7	C8	C9	C10	C11	C12	C13	C14	C15	C16
90,2	92,2	91,4	95,5	96,4	96,3	94,5	98,4	96,4	94,3	92,7	90,7	90,9	87,8	91,6	86,3

### Color Quality Scale by reference color



CQS Q values

Q1	Q2	Q3	Q4	Q5	Q6	Q7	Q8	Q9	Q10	Q11	Q12	Q13	Q14	Q15
86,3	94,8	92,1	92,6	93,3	92,8	93,2	94,0	96,6	95,1	94,2	93,6	92,5	84,5	85,1

# Light Measurement Report

Print date: 8-4-2025

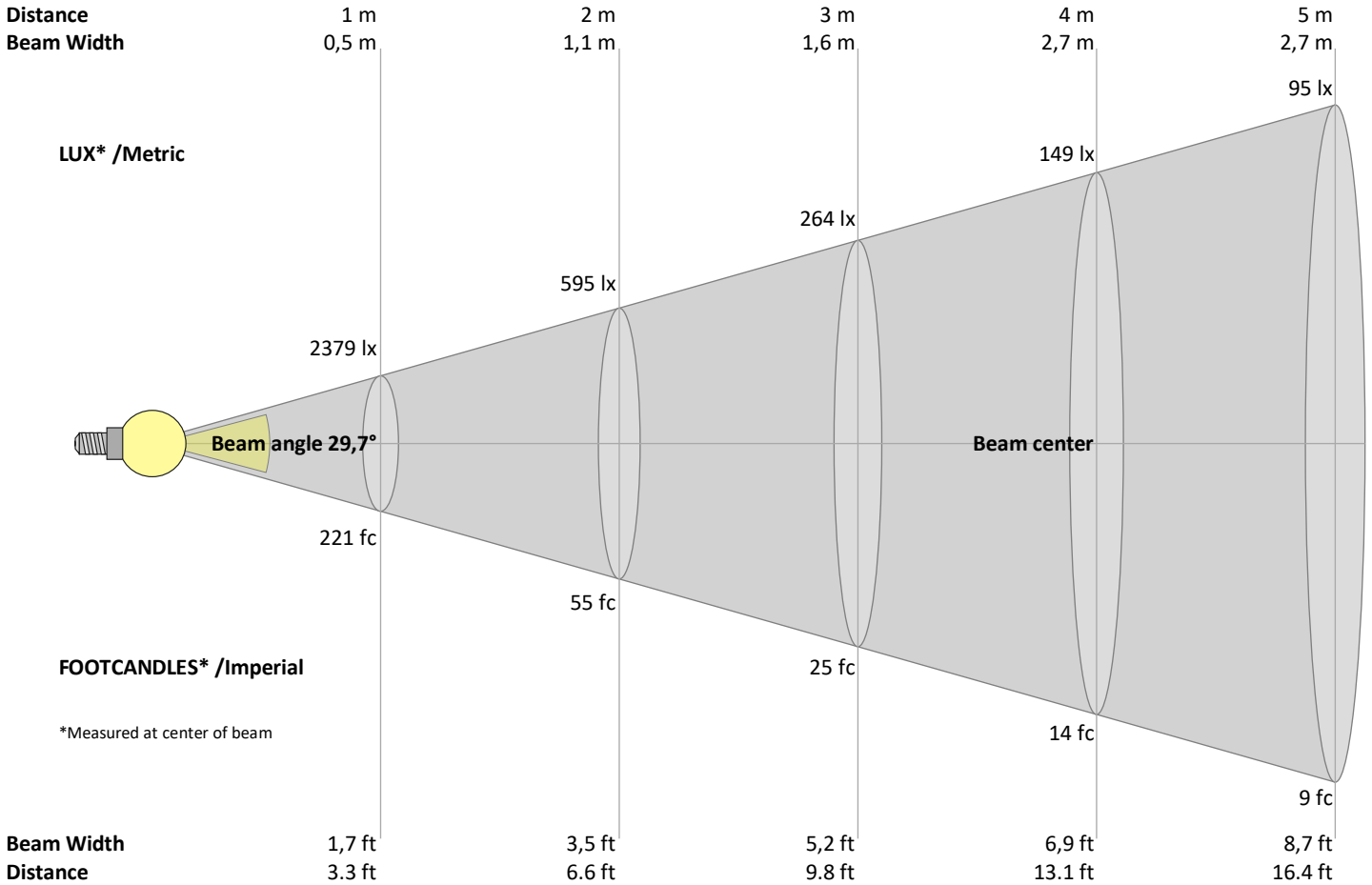
Measurement date and time: 8-4-2025 08:45:50 – Measurement no. VFR-250408-0625-MS

Measurement tracking No. and Link: [VT250408-003375](https://www.viso-systems.com/VT250408-003375)

Operator:



## Beam Details



### Beam intensities from 1 – 20 m

1	2	3	4	5	6	7	8	9	10	11	12	13	14	15	16	17	18	19	20	m
3,3	6,6	9,8	13,1	16,4	19,7	23	26,2	29,5	32,8	36,1	39,4	42,7	45,9	49,2	52,5	55,8	59,1	62,3	65,6	ft
2379	595	264	149	95	66	49	37	29	24	20	17	14	12	11	9	8	7	7	6	lux
221	55,2	24,6	13,8	8,8	6,1	4,5	3,5	2,7	2,2	1,8	1,5	1,3	1,1	1	0,9	0,8	0,7	0,6	0,6	fc

### Intensities in 0° c-plane

0°	2°	4°	6°	8°	10°	12°	14°	16°	18°	20°	22°	24°	26°	28°	30°	32°	34°	36°	38°	γ
2379	2330	2185	2040	1800	1550	1307	1076	844	701	567	464	408	352	326	304	274	235	196	147	cd
100%	98%	92%	86%	76%	65%	55%	45%	36%	29%	24%	20%	17%	15%	14%	13%	12%	10%	8%	6%	of 0°val

### Intensities in 90° c-plane

0°	2°	4°	6°	8°	10°	12°	14°	16°	18°	20°	22°	24°	26°	28°	30°	32°	34°	36°	38°	γ
2379	2520	2373	2227	2099	1975	1835	1663	1491	1303	1112	933	775	617	497	385	294	243	192	173	cd
100%	106%	100%	94%	88%	83%	77%	70%	63%	55%	47%	39%	33%	26%	21%	16%	12%	10%	8%	7%	of 0°val

### Intensities in 180° c-plane

0°	2°	4°	6°	8°	10°	12°	14°	16°	18°	20°	22°	24°	26°	28°	30°	32°	34°	36°	38°	γ
2379	2330	2185	2040	1800	1550	1307	1076	844	701	567	464	408	352	326	304	274	235	196	147	cd
100%	98%	92%	86%	76%	65%	55%	45%	36%	29%	24%	20%	17%	15%	14%	13%	12%	10%	8%	6%	of 0°val

### Intensities in 270° c-plane

0°	2°	4°	6°	8°	10°	12°	14°	16°	18°	20°	22°	24°	26°	28°	30°	32°	34°	36°	38°	γ
2379	2520	2373	2227	2099	1975	1835	1663	1491	1303	1112	933	775	617	497	385	294	243	192	173	cd
100%	106%	100%	94%	88%	83%	77%	70%	63%	55%	47%	39%	33%	26%	21%	16%	12%	10%	8%	7%	of 0°val

# Light Measurement Report

Print date: 8-4-2025

Measurement date and time: 8-4-2025 08:45:50 – Measurement no. VFR-250408-0625-MS

Measurement tracking No. and Link: [VT250408-003375](#)

Operator:



## Light Planning – UGR table

Uncorrected, comprehensive UGR table according to 117-1995

Reflectances		70	70	50	50	30	70	70	50	50	30
	ρ Ceiling	70	70	50	50	30	70	70	50	50	30
	ρ Walls	50	30	50	30	30	50	30	50	30	30
	ρ Floor	20	20	20	20	20	20	20	20	20	20
Room size		Viewed Crosswise					Viewed Endwise				
H = mounting height above eye level		(Viewing direction orthogonal to lamp length axis)					(Viewing direction parallel to lamp length axis)				
X	Y										
2H	2H	18,6	19,1	18,7	19,3	19,5	19,5	20,0	19,5	20,2	20,4
	3H	18,3	19,0	18,7	19,2	19,3	19,2	19,9	19,5	20,0	20,2
	4H	18,2	18,9	18,6	19,1	19,3	19,1	19,8	19,5	20,0	20,2
	6H	18,2	18,7	18,5	19,0	19,4	19,1	19,6	19,4	19,9	20,3
	8H	18,2	18,7	18,5	19,0	19,4	19,0	19,6	19,4	19,9	20,3
	12H	18,1	18,6	18,4	19,0	19,4	19,0	19,5	19,3	19,8	20,3
4H	2H	18,2	18,9	18,6	19,1	19,3	19,1	19,7	19,5	20,0	20,2
	3H	18,1	18,6	18,5	19,0	19,4	19,0	19,5	19,3	19,9	20,3
	4H	18,0	18,4	18,4	18,9	19,4	18,9	19,3	19,3	19,7	20,3
	6H	17,9	18,4	18,4	18,7	19,1	18,8	19,3	19,3	19,6	20,0
	8H	17,8	18,3	18,3	18,6	19,0	18,7	19,2	19,2	19,5	19,9
	12H	17,8	18,1	18,3	18,5	19,0	18,6	19,0	19,1	19,4	19,9
8H	4H	17,8	18,3	18,3	18,6	19,0	18,7	19,2	19,2	19,5	19,9
	6H	17,8	18,1	18,3	18,5	19,1	18,6	19,0	19,1	19,4	19,9
	8H	17,8	18,0	18,3	18,5	19,1	18,6	18,9	19,2	19,4	20,0
	12H	17,7	17,9	18,3	18,4	19,0	18,6	18,8	19,2	19,3	19,9
12H	4H	17,8	18,1	18,3	18,5	19,0	18,6	19,0	19,1	19,4	19,9
	6H	17,8	18,0	18,3	18,5	19,1	18,6	18,9	19,2	19,4	20,0
	8H	17,7	17,9	18,3	18,4	19,0	18,6	18,8	19,2	19,3	19,9

### Variations with the observer position for the luminaire spacings, S:

S = 1.0H	4,8 / -12,2	3,9 / -12,0
S = 1.5H	7,4 / -14,1	6,5 / -14,0
S = 2.0H	9,3 / -17,4	8,4 / -16,0

## Coefficients of Utilization

Ceiling reflectance	80			70			50			30			10			0		
Wall reflectance	70	50	30	10	70	50	30	10	50	30	10	50	30	10	50	30	10	0
Floor reflectance	20	20	20	20	20	20	20	20	20	20	20	20	20	20	20	20	20	0
RCR	(RCR: Room Cavity Ratio)																	
	Room Values are expressed as percentage of Lumen delivered to the task surface																	
0	119	119	119	119	116	116	116	116	111	111	111	106	106	106	102	102	102	100
1	114	112	109	107	112	110	108	106	106	104	102	102	101	99	98	97	97	95
2	109	105	101	98	107	103	100	97	100	97	95	97	95	93	94	93	91	90
3	105	99	95	91	103	98	94	90	95	92	89	93	90	88	91	88	86	85
4	100	94	89	85	99	93	88	85	91	87	84	89	85	83	87	84	82	80
5	96	89	84	80	95	88	83	80	86	82	79	85	81	78	83	80	78	76
6	92	85	79	76	91	84	79	75	82	78	75	81	77	74	80	76	74	73
7	89	81	75	72	87	80	75	72	79	74	71	78	74	71	77	73	70	69
8	85	77	72	68	84	76	71	68	75	71	68	74	70	68	74	70	67	66
9	82	74	69	65	81	73	68	65	72	68	65	71	67	65	71	67	64	63
10	79	71	66	62	78	70	65	62	69	65	62	69	65	62	68	64	62	61

# Light Measurement Report

Print date: 8-4-2025

Measurement date and time: 8-4-2025 08:45:50 – Measurement no. VFR-250408-0625-MS

Measurement tracking No. and Link: [VT250408-003375](#)

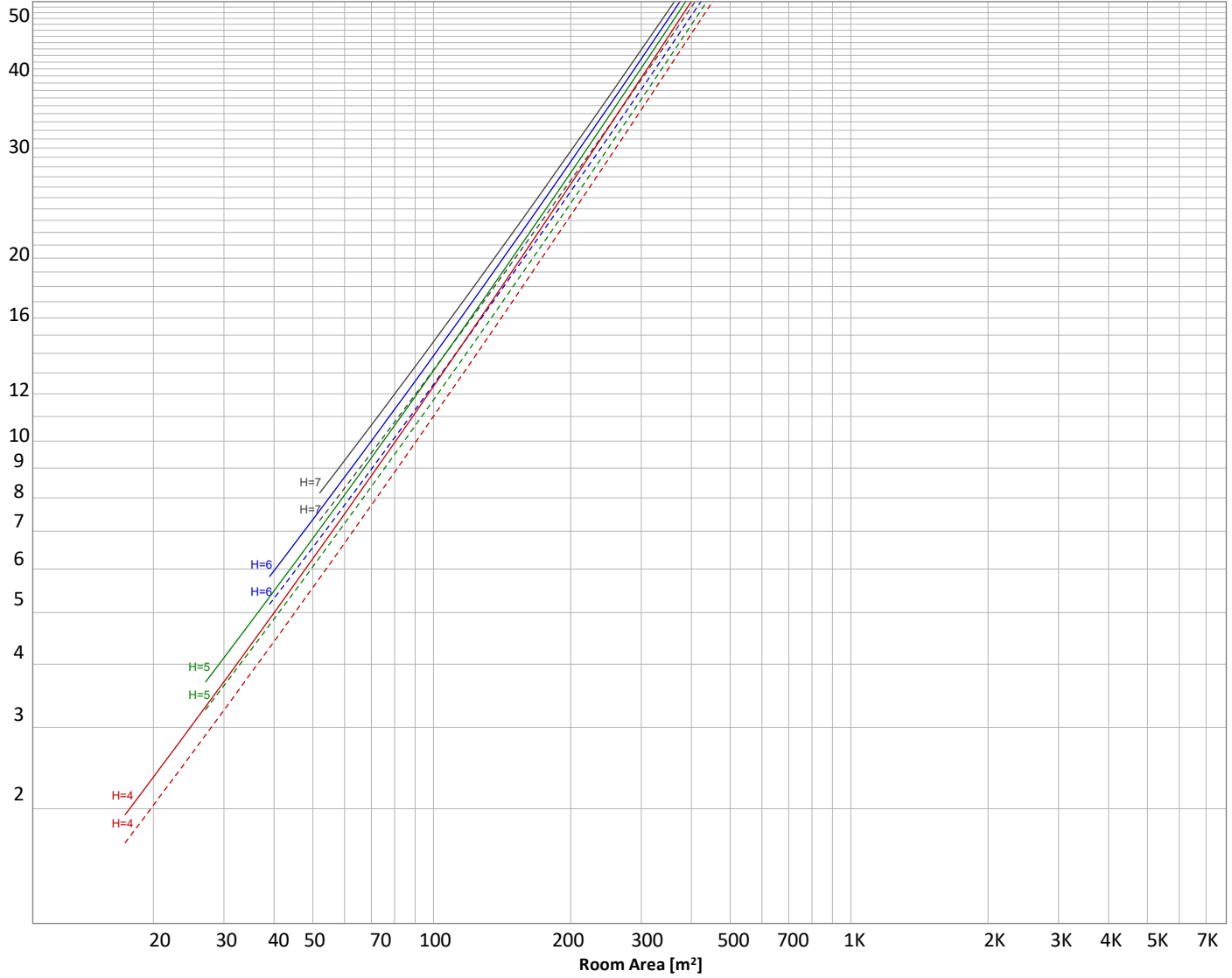
Operator:



## Luminaire budgetary diagram

Uncorrected, comprehensive UGR table according to 117-1995

LAMPS (number of lamps)



### Conditions

H = Room height	Flux = 900 lm	ρ(%)			
H <sub>down</sub> = Lamp distance from ceiling =	0.00 m	Line type	Ceiling reflectance	Wall reflectance	Floor reflectance
H <sub>work</sub> = Work area height from floor =	0.00 m	-----	70	50	30
E <sub>work</sub> = Average lux on work area =	100 lx	—————	50	30	20

### Zonal Lumen Summary

0°-10°	10°-20°	20°-30°	30°-40°	40°-50°	50°-60°	60°-70°	70°-80°	80°-90°
197 lm	315 lm	207 lm	131 lm	40,3 lm	6,28 lm	2,64 lm	0,527 lm	0,058 lm
90°-100°	100°-110°	110°-120°	120°-130°	130°-140°	140°-150°	150°-160°	160°-170°	170°-180°
0,007 lm	0,004 lm	0,001 lm	0,001 lm	0,005 lm	0,025 lm	0,070 lm	0,085 lm	0,031 lm

# Light Measurement Report

Print date: 8-4-2025

Measurement date and time: 8-4-2025 08:45:50 – Measurement no. VFR-250408-0625-MS

Measurement tracking No. and Link: [VT250408-003375](#)

Operator:



## Outdoor Light Planning

### Lumen per Zone

Zone (γ)	Lumen	% Total
0-10°	{LUM00-10} lm	#VALUE!
10-20°	{LUM10-20} lm	#VALUE!
20-30°	{LUM20-30} lm	#VALUE!
30-40°	{LUM30-40} lm	#VALUE!
40-50°	{LUM40-50} lm	#VALUE!
50-60°	{LUM50-60} lm	#VALUE!
60-70°	{LUM60-70} lm	#VALUE!
70-80°	{LUM70-80} lm	#VALUE!
80-90°	{LUM80-90} lm	#VALUE!
90-100°	{LUM90-100} lm	#VALUE!
100-110°	{LUM100-110} lm	#VALUE!
110-120°	{LUM110-120} lm	#VALUE!
120-130°	{LUM120-130} lm	#VALUE!
130-140°	{LUM130-140} lm	#VALUE!
140-150°	{LUM140-150} lm	#VALUE!
150-160°	{LUM150-160} lm	#VALUE!
160-170°	{LUM160-170} lm	#VALUE!
170-180°	{LUM170-180} lm	#VALUE!
<b>Total</b>	<b>0 lm</b>	<b>#VALUE!</b>

### Intensity peaks

Max intensity	{PEAK} cd
Intensity, 90°	{INT90} cd
Intensity, 0°	{INT0} cd

### Zonal Lumen summary

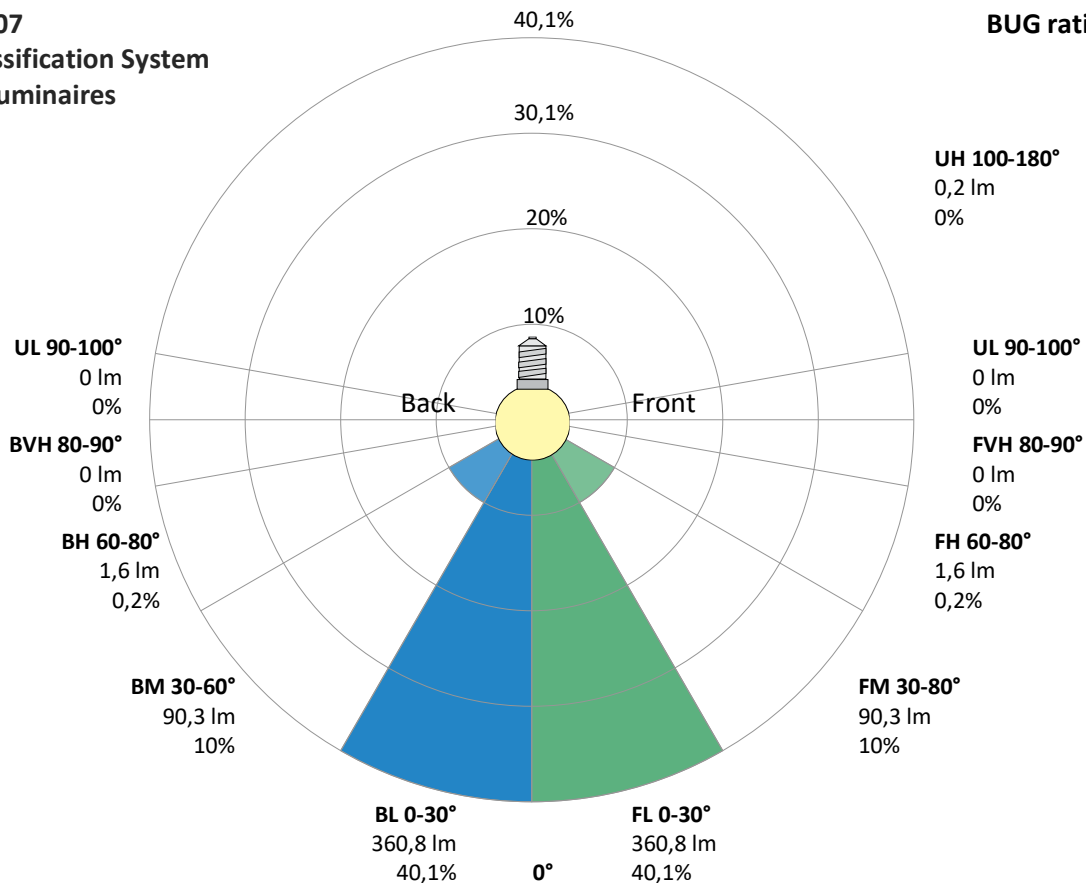
Zone (γ)	Lumen	% Total
0-30°	{LUM00-30} lm	#VALUE!
0-40°	{LUM00-40} lm	#VALUE!
0-60°	{LUM00-60} lm	#VALUE!
60-90°	{LUM60-90} lm	#VALUE!
70-100°	{LUM70-100} lm	#VALUE!
90-120°	{LUM90-120} lm	#VALUE!
0-90°	{LUM00-90} lm	#VALUE!
90-180°	{LUM90-180} lm	#VALUE!
0-180°	{LUM00-180} lm	#VALUE!

### BUG rating

	Lumen	% Total
<b>Forward light</b>		
Low(0-30°)	{BUG0} lm	#VALUE!
Medium(30-60°)	{BUG1} lm	#VALUE!
High(60-80°)	{BUG2} lm	#VALUE!
Very high(80-90°)	{BUG3} lm	#VALUE!
<b>Back light</b>		
Low(0-30°)	{BUG4} lm	#VALUE!
Medium(30-60°)	{BUG5} lm	#VALUE!
High(60-80°)	{BUG6} lm	#VALUE!
Very high(80-90°)	{BUG7} lm	#VALUE!
<b>Uplight</b>		
Low(90-100°)	{BUG8} lm	#VALUE!
High(100-180°)	{BUG9} lm	#VALUE!

## IESNA TM-15-07 Luminaire Classification System For Outdoor Luminaires

**BUG rating B1 U0 G0**



# Light Measurement Report

Print date: 8-4-2025

Measurement date and time: 8-4-2025 08:45:50 – Measurement no. VFR-250408-0625-MS

Measurement tracking No. and Link: [VT250408-003375](#)

Operator:

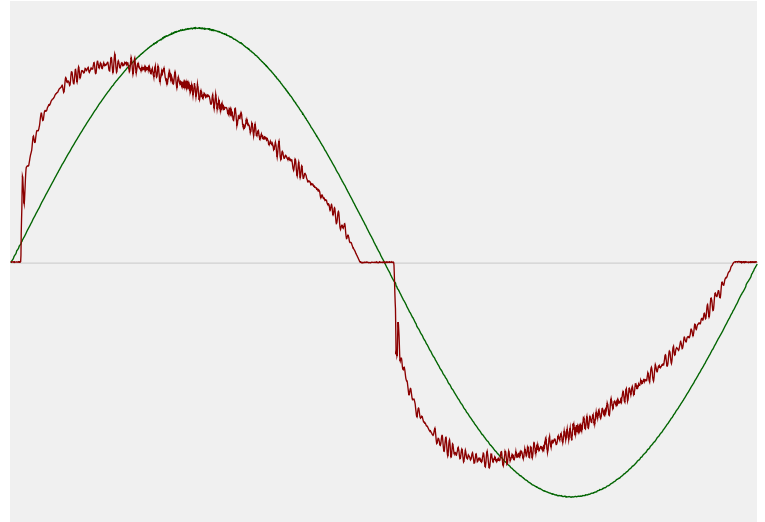


## Power Details

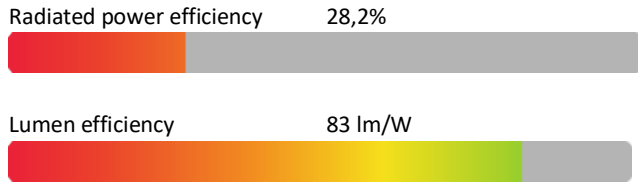
### Input Power

Power feed to light source	10,9 W
Frequency of input power	50 Hz
RMS Input voltage feed, $V_{RMS}$	230 V
RMS Input current feed, $I_{RMS}$	0,050 A
Volt-Ampere or apparent power = $V_{RMS} * I_{RMS}$	11,58 VA
Displacement factor of AC power feed	0,96
Power factor of AC current feed	0,94
Total harmonic distortion of the current	17,81%
Total harmonic distortion of the voltage	0,06%

### Input Power Curve



### Efficiency



## Stabilization Details

### Warmup Conditions

Stable period	15 min
Stable change max	2,0%
Minimum time	15 min

### Color Temperature Change

CCT start	2703 K
CCT shift	-3 K
CCT end	2700 K

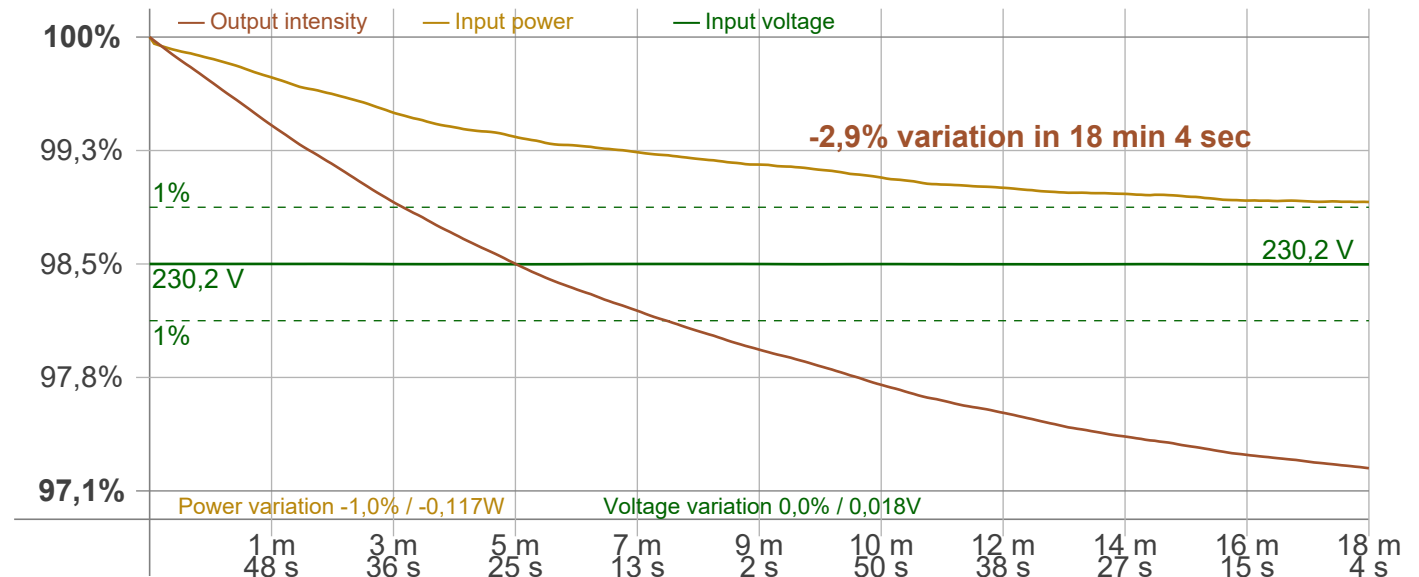
### Warmup Result

Total warmup time	Lamp stabilized in 18 min 4 sec
Warmup variation	-2,9%

### Output Change

Output start	926 lm
Output change	-27 lm
Output end	900 lm

## Stabilization Curve



# Light Measurement Report

Print date: 8-4-2025

Measurement date and time: 8-4-2025 08:45:50 – Measurement no. VFR-250408-0625-MS

Measurement tracking No. and Link: [VT250408-003375](#)

Operator:



## Flicker /TLA details

Flicker Meter Type Viso Systems LabFlicker  
 Frequency of input power 50 Hz  
 Flicker/TLA sample rate 20000 samples/s

**Measurement time**  
 PstLM 180 sec  
 All other indices 1,2 sec

### Flicker indices according to Illuminating Engineering Society (IES)

Flicker frequency 99,5 Hz  
 Percent Flicker 0,78 %  
 Flicker index 0

### Flicker indices according to California Energy Commission (CEC) 2016b

JA8/10 40 Hz 0,05 %  
 JA8/10 90 Hz 0,05 %  
 JA8/10 200 Hz 0,77 %  
 JA8/10 400 Hz 0,77 %  
 JA8/10 1000 Hz 0,78 %

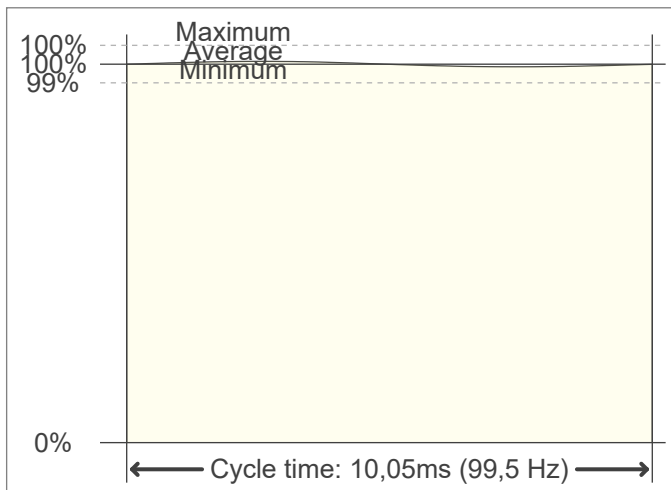
### TLA indices (re IEC TR 61547-1, IEC 61000-3-3 and IEC 61000-4-15)

PstLM value (F < 80 Hz) 0,04  
 SVM value (80 < F < 2000 Hz) 0,03

### Flicker indices according to Lighting Research Center (2015)

Perception metric, Assist Mp 0,02

### Flicker frame (frame of one flicker period in time domain)



### Flicker FFT (flicker curve in frequency domain)



### IEEE 1789 Frequency/modulation plot

